



# Procore / Property Council Industry Sentiment Survey

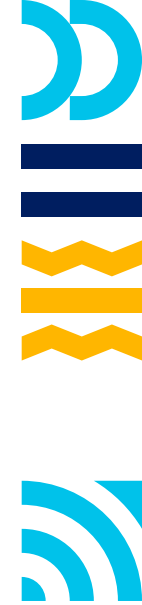
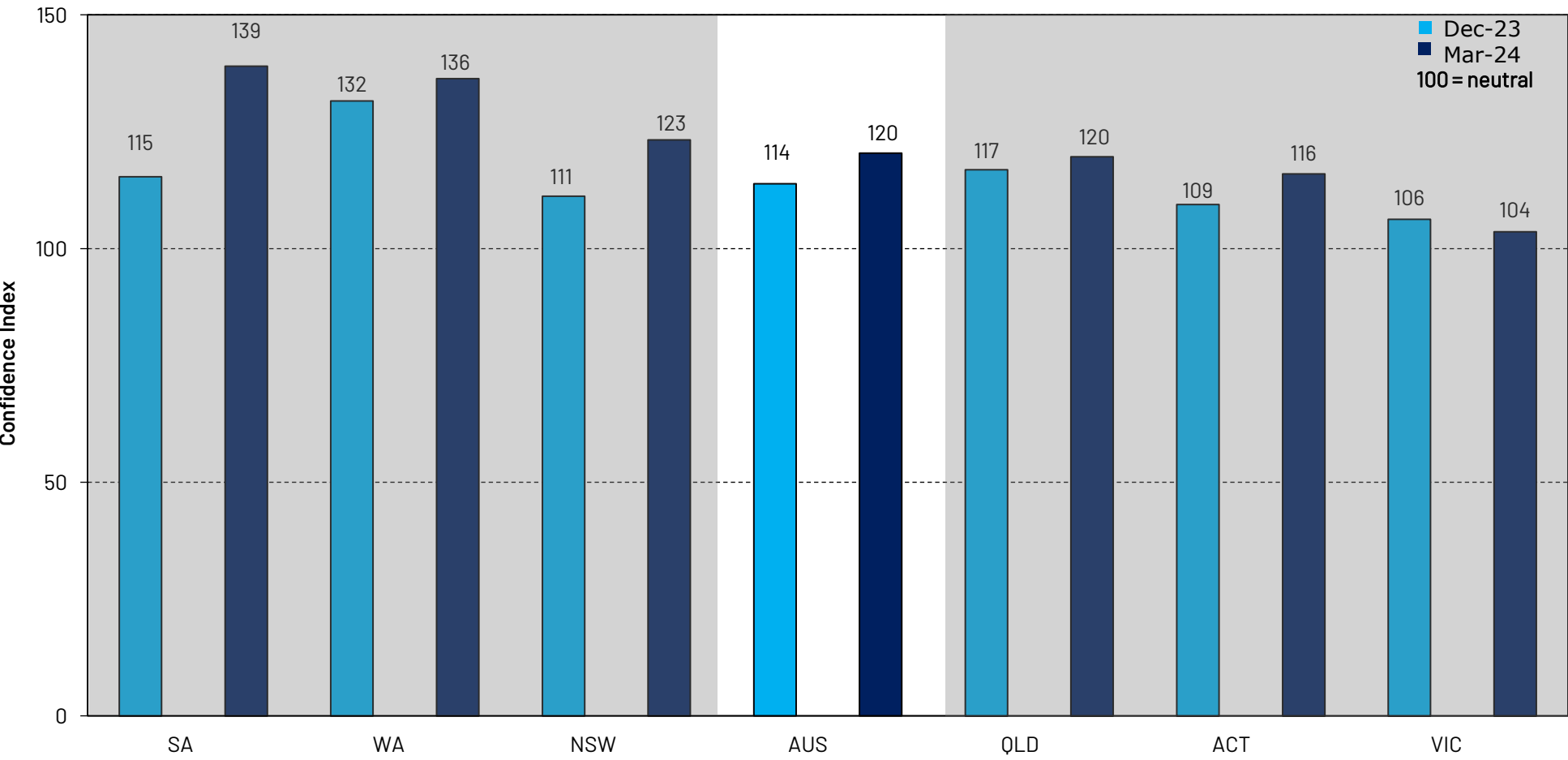
March 2024 Chartbook

Sponsored by

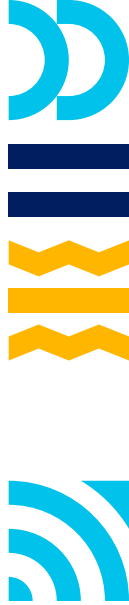
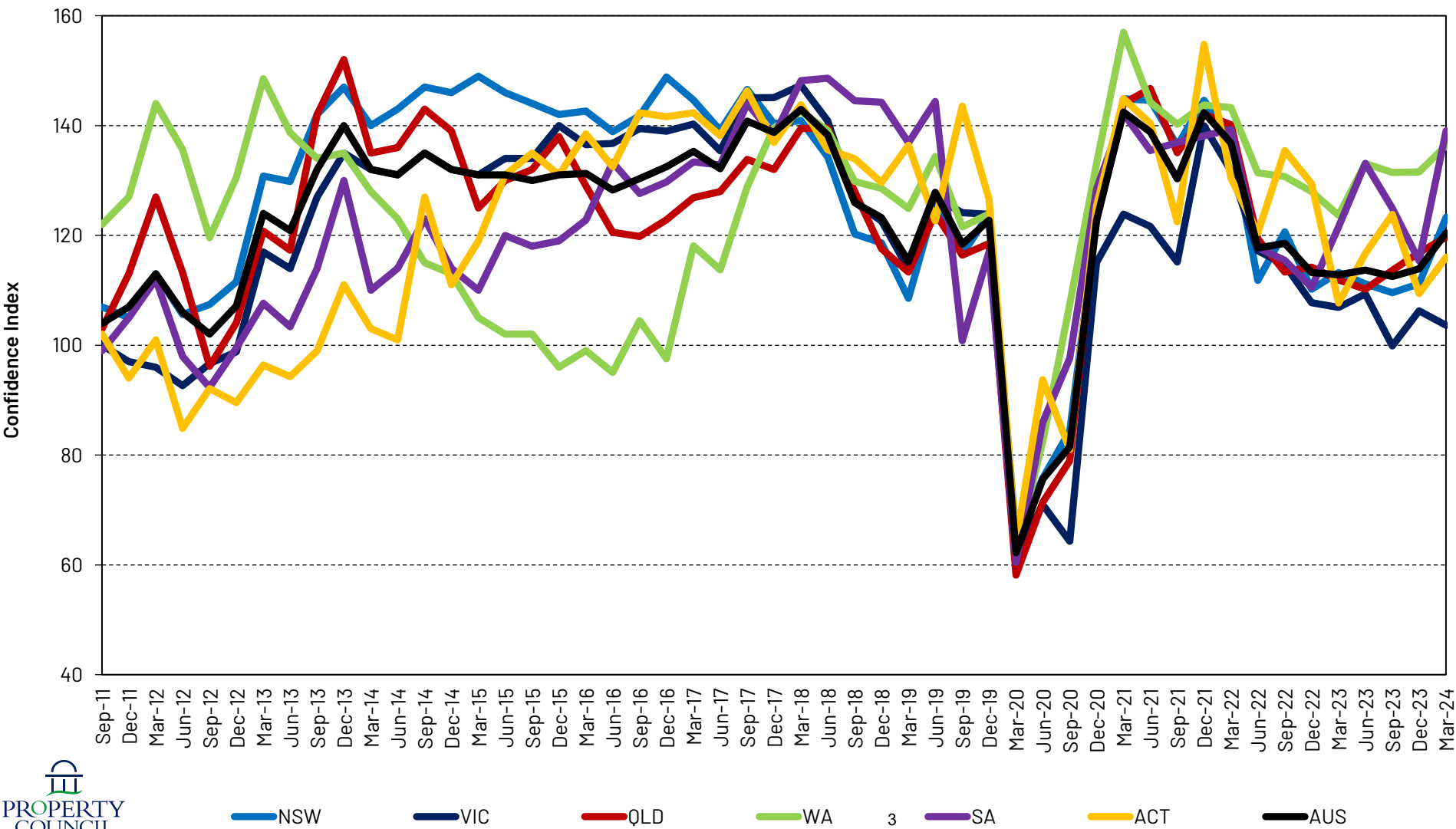
**PROCORE**<sup>®</sup>



# Procore / Property Council Industry Sentiment Survey March 2024

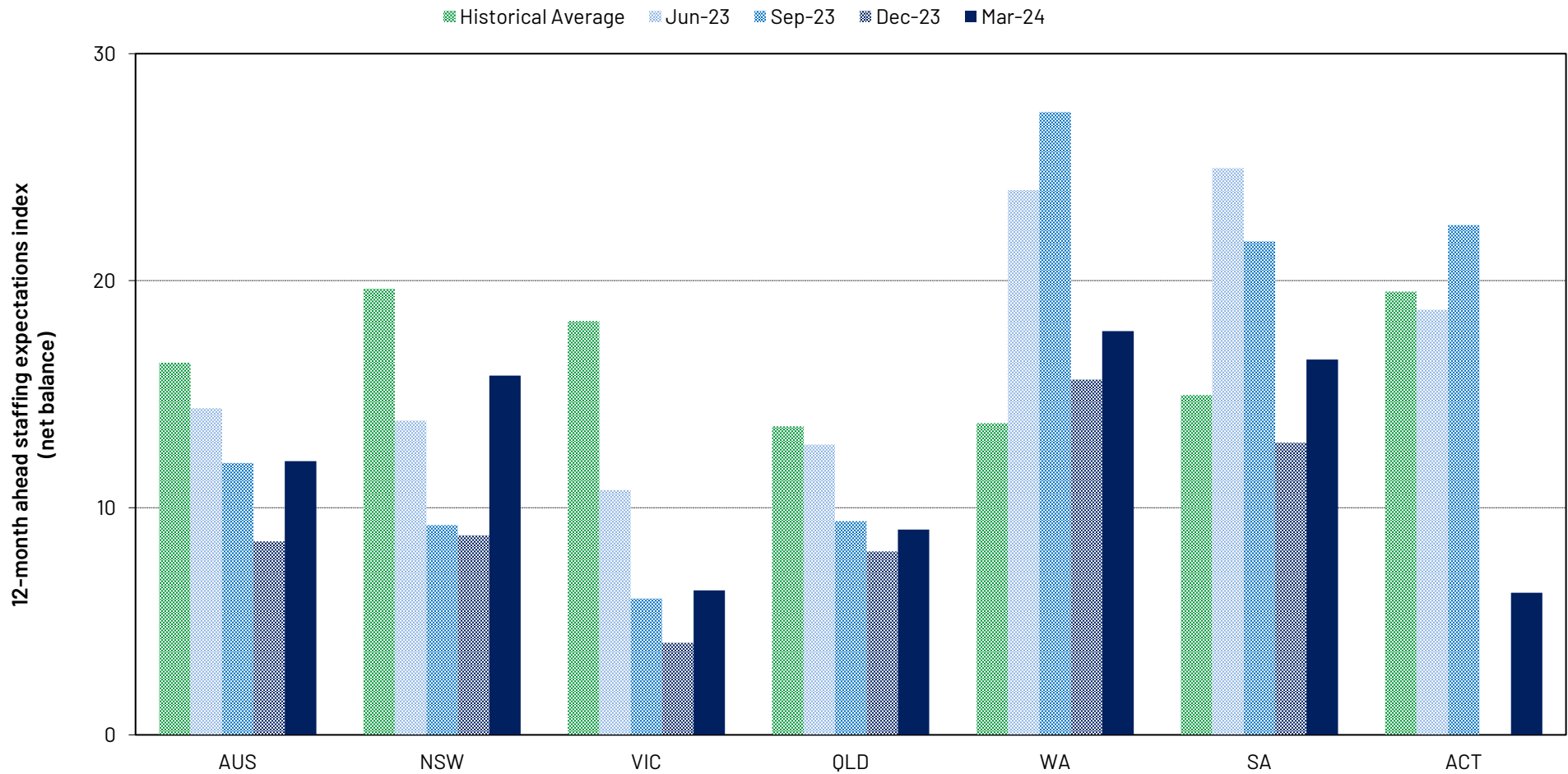


# Procore / Property Council Industry Sentiment Survey



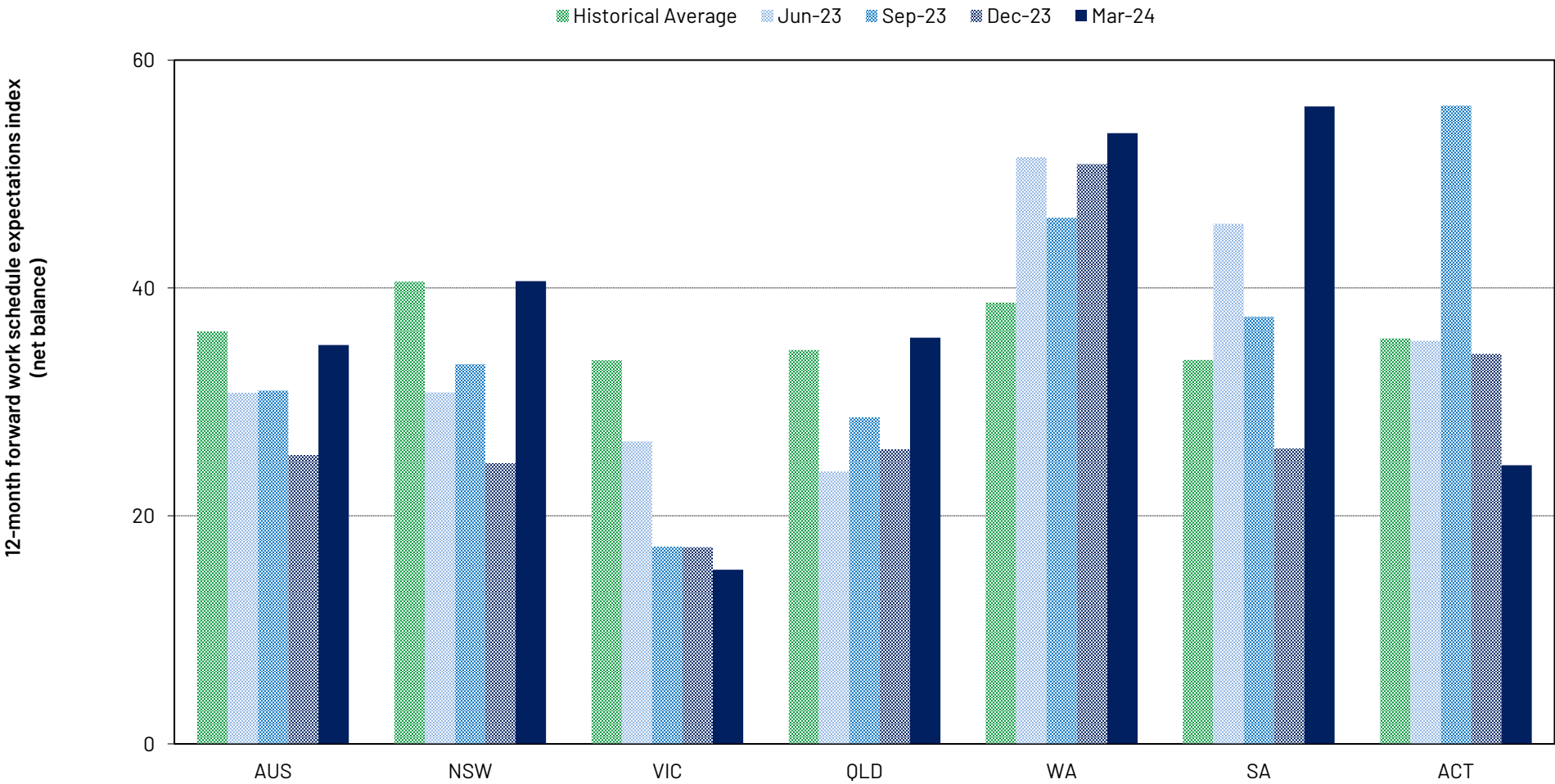
# Staffing level expectations

Over the NEXT 12 MONTHS do you expect your staffing levels to:



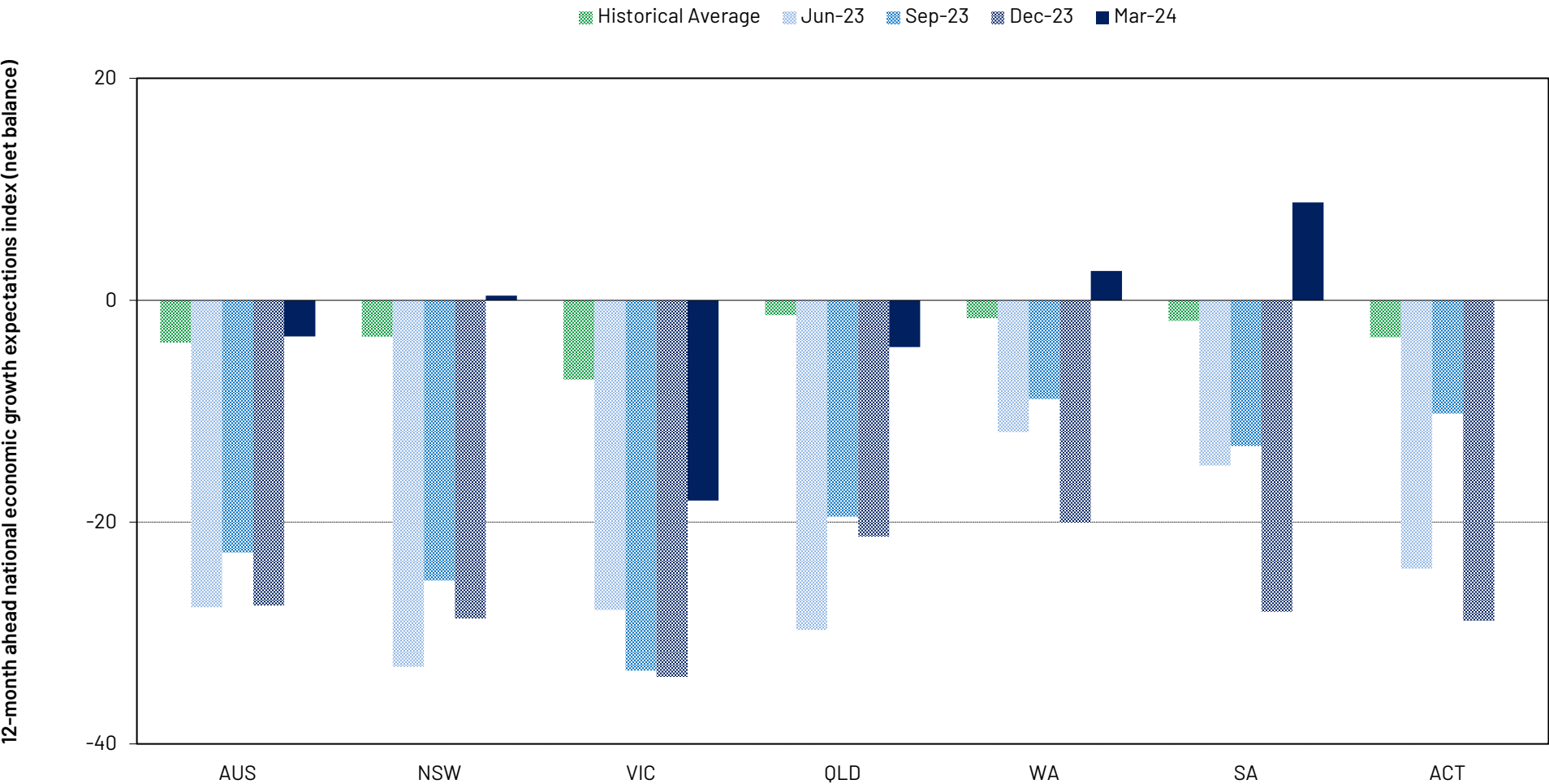
# Forward work schedule expectations

Over the NEXT 12 MONTHS in the state you primarily operate, will your forward work schedule:



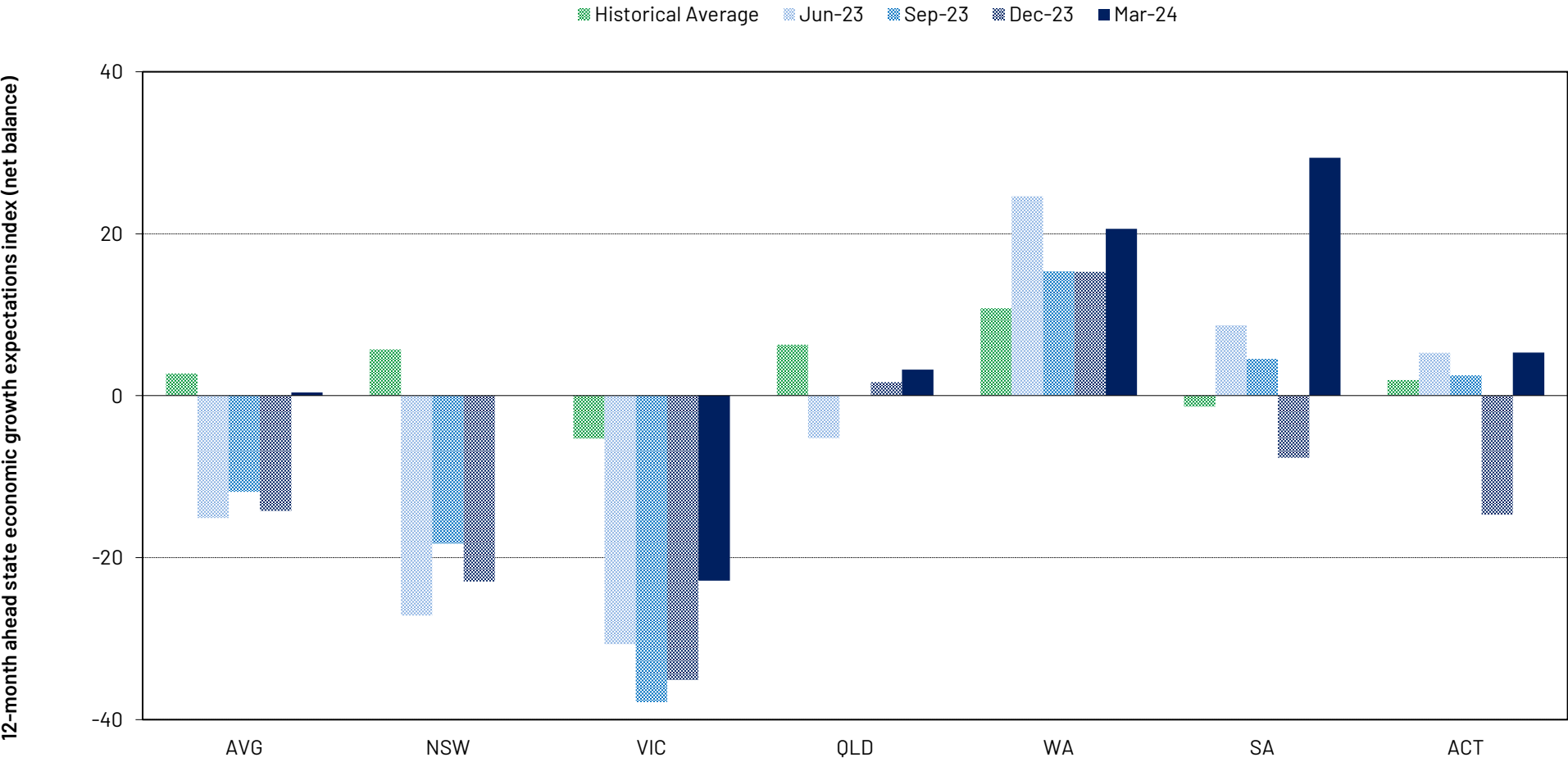
# National economic growth expectations

Over the NEXT 12 MONTHS will Australia's economic growth be:



# State economic growth expectations

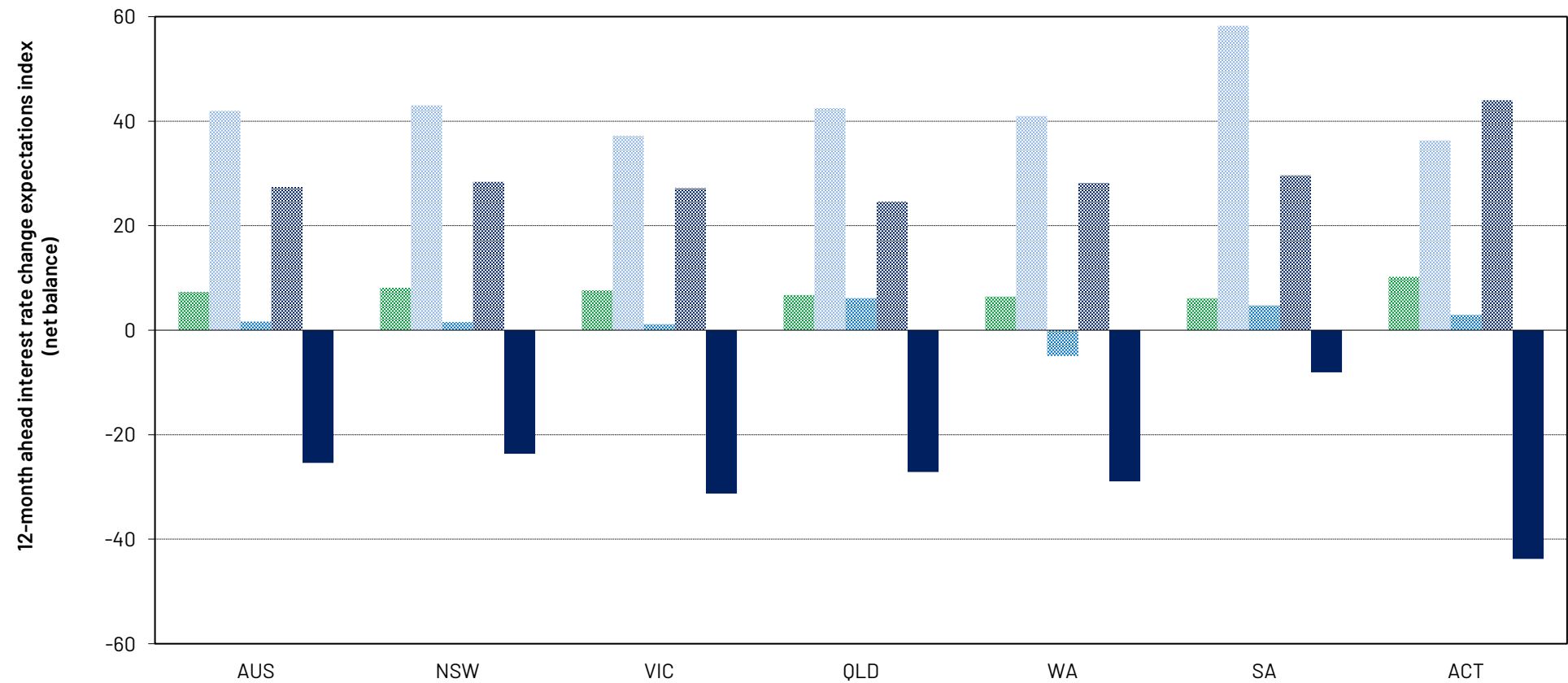
Over the NEXT 12 MONTHS in the state you primarily operate, will economic growth be:



# Interest rate expectations

Over the NEXT 12 MONTHS how do you expect INTEREST RATES to change:

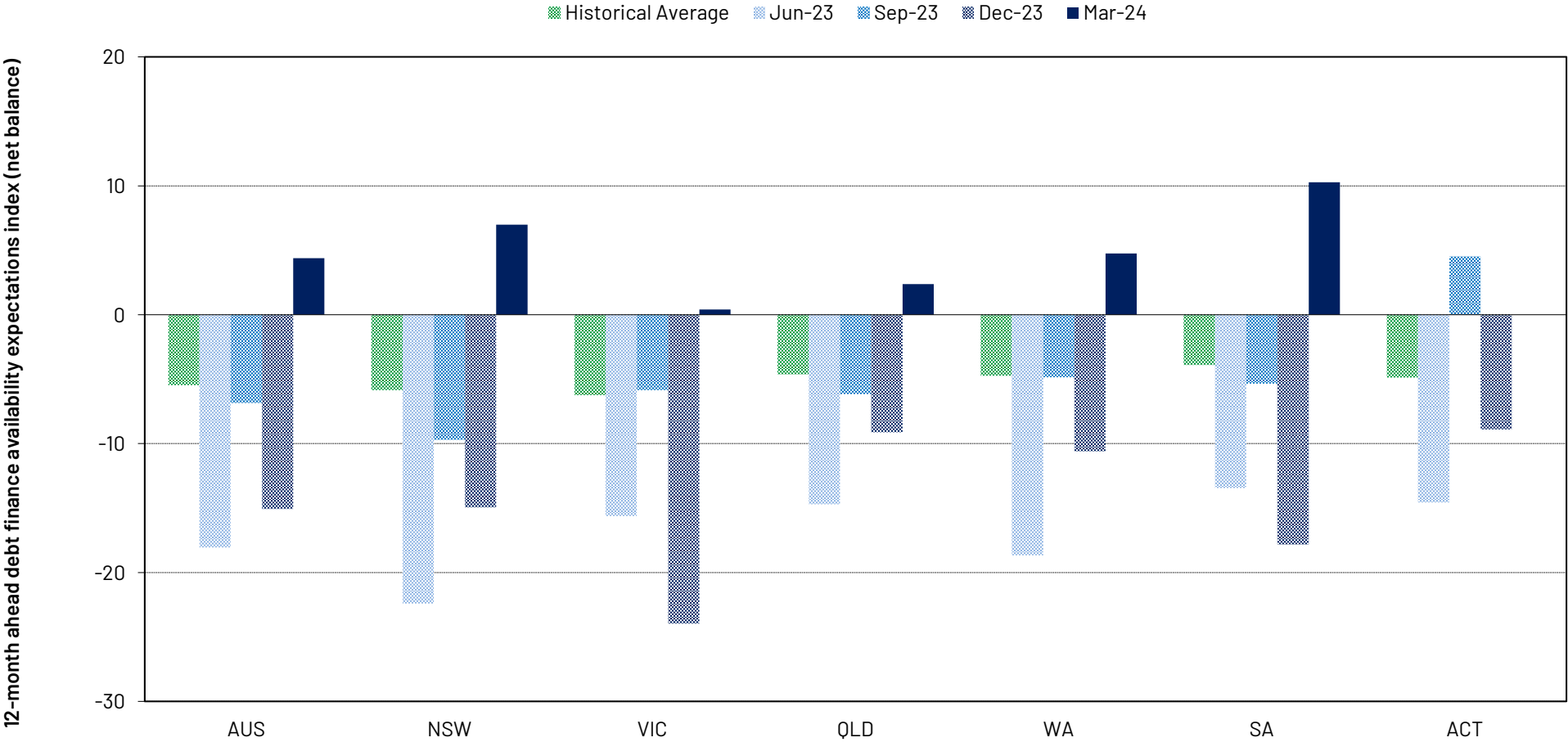
Historical Average Jun-23 Sep-23 Dec-23 Mar-24





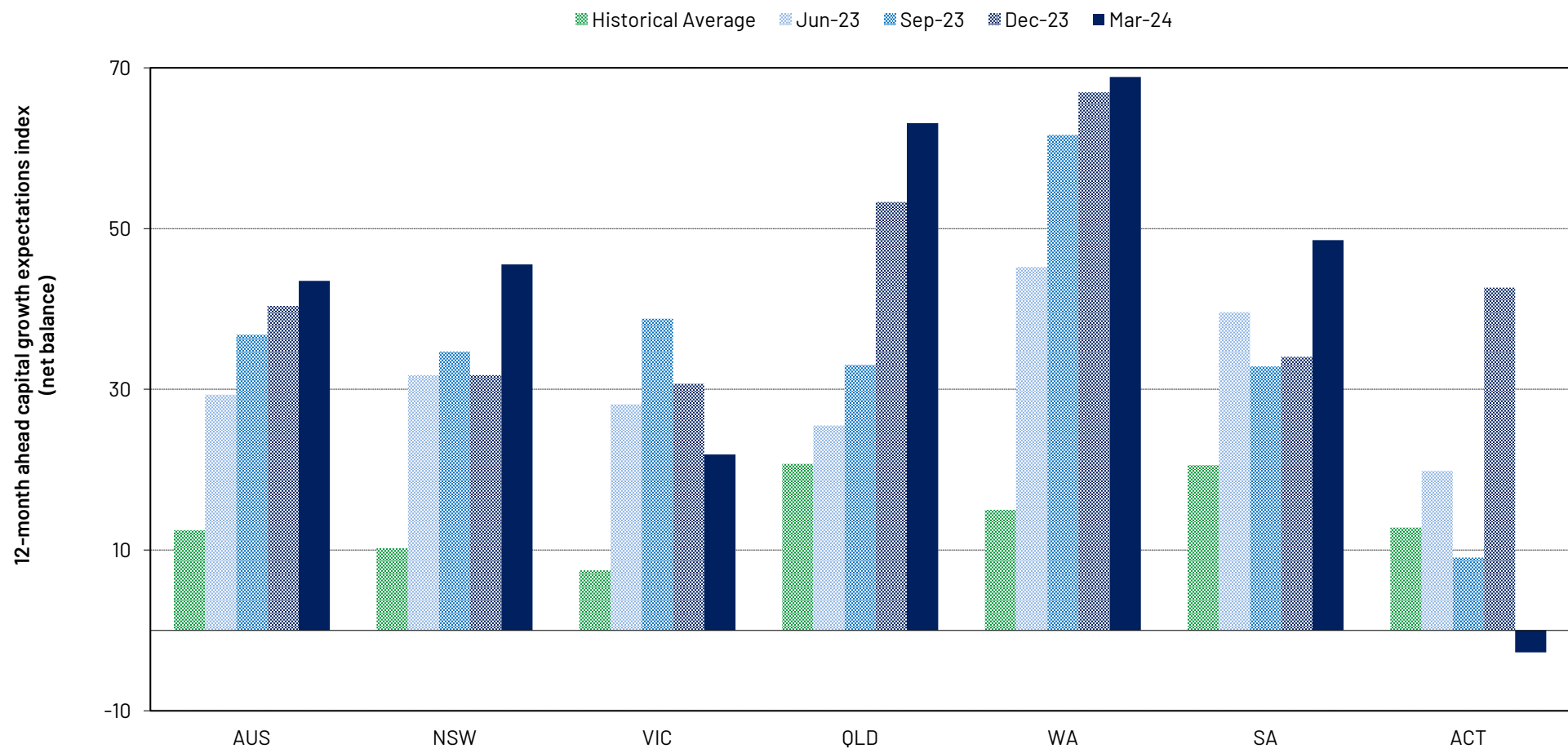
# Debt finance availability expectations

Over the NEXT 12 MONTHS how do you expect the AVAILABILITY OF DEBT FINANCE to change:



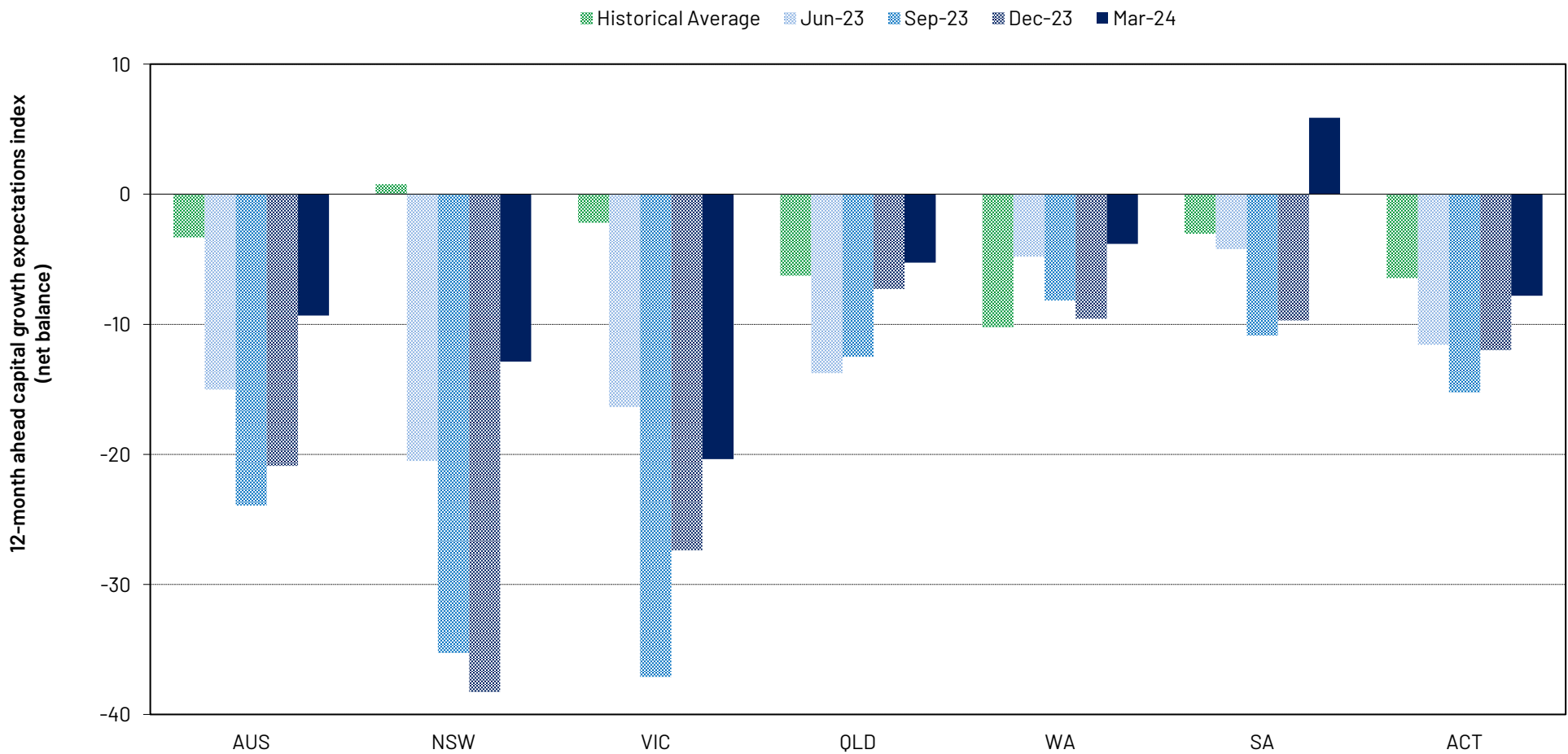
# House capital growth expectations

Over the NEXT 12 MONTHS in the state you primarily operate, how do you expect capital values to change for RESIDENTIAL:



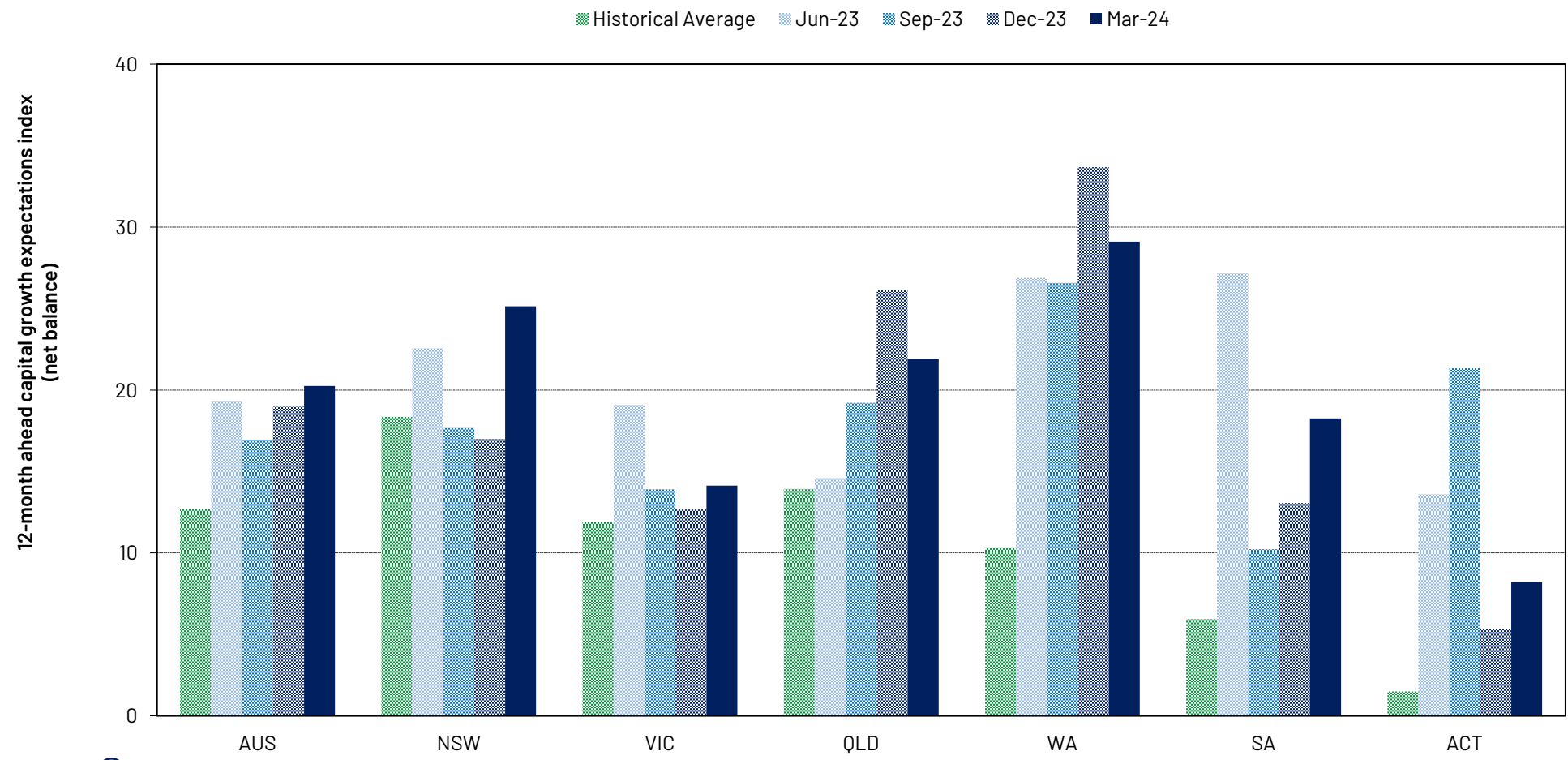
# Office capital growth expectations

Over the NEXT 12 MONTHS in the state you primarily operate, how do you expect capital values to change for OFFICE:



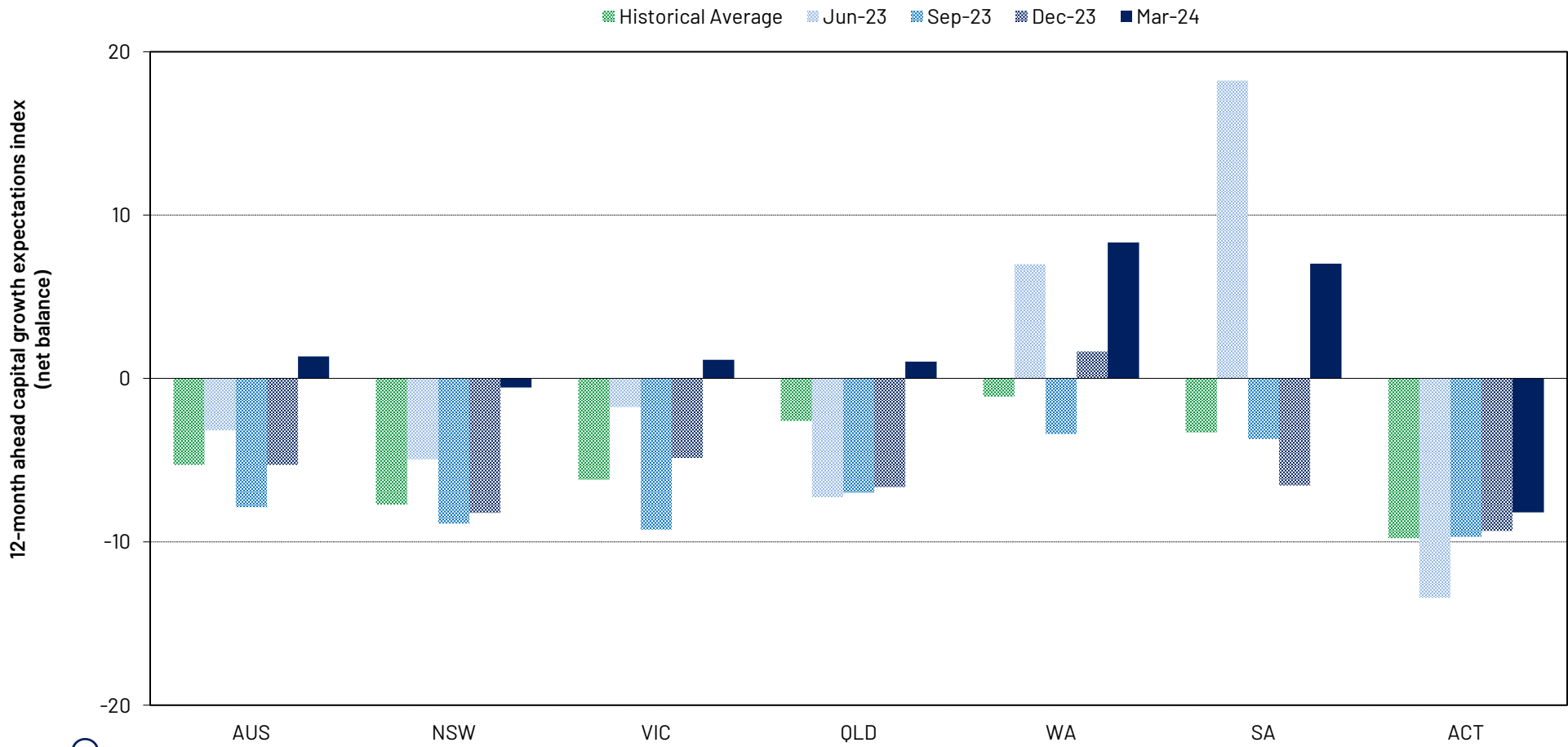
# Industrial capital growth expectations

Over the NEXT 12 MONTHS in the state you primarily operate, how do you expect capital values to change for INDUSTRIAL:



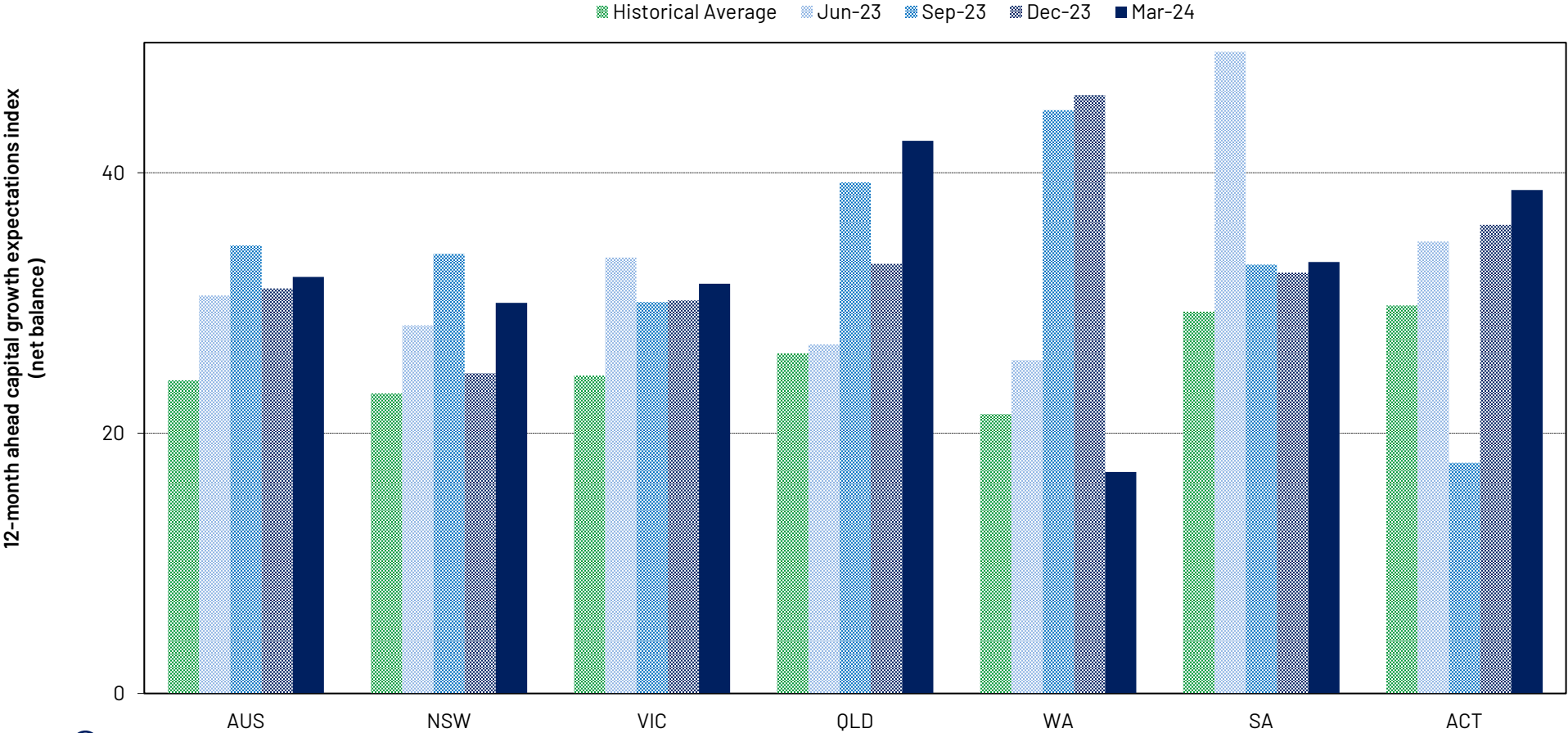
# Retail capital growth expectations

Over the NEXT 12 MONTHS in the state you primarily operate, how do you expect capital values to change for SHOPPING CENTRES:



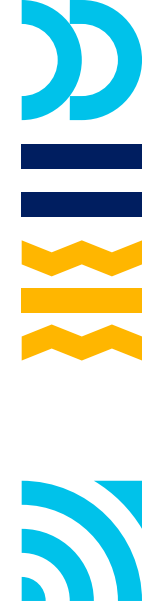
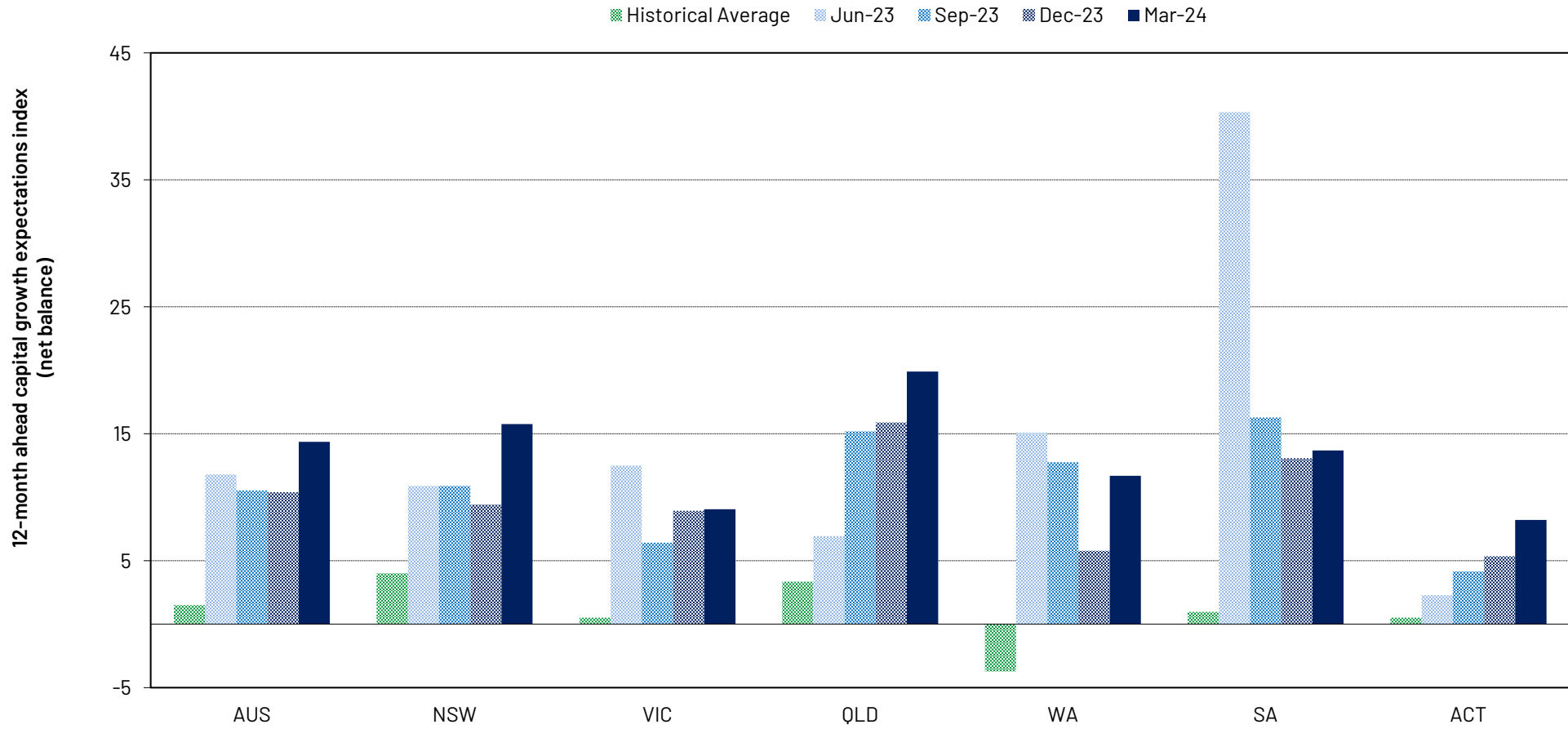
# Retirement living capital growth expectations

Over the NEXT 12 MONTHS in the state you primarily operate, how do you expect capital values to change for RETIREMENT LIVING:



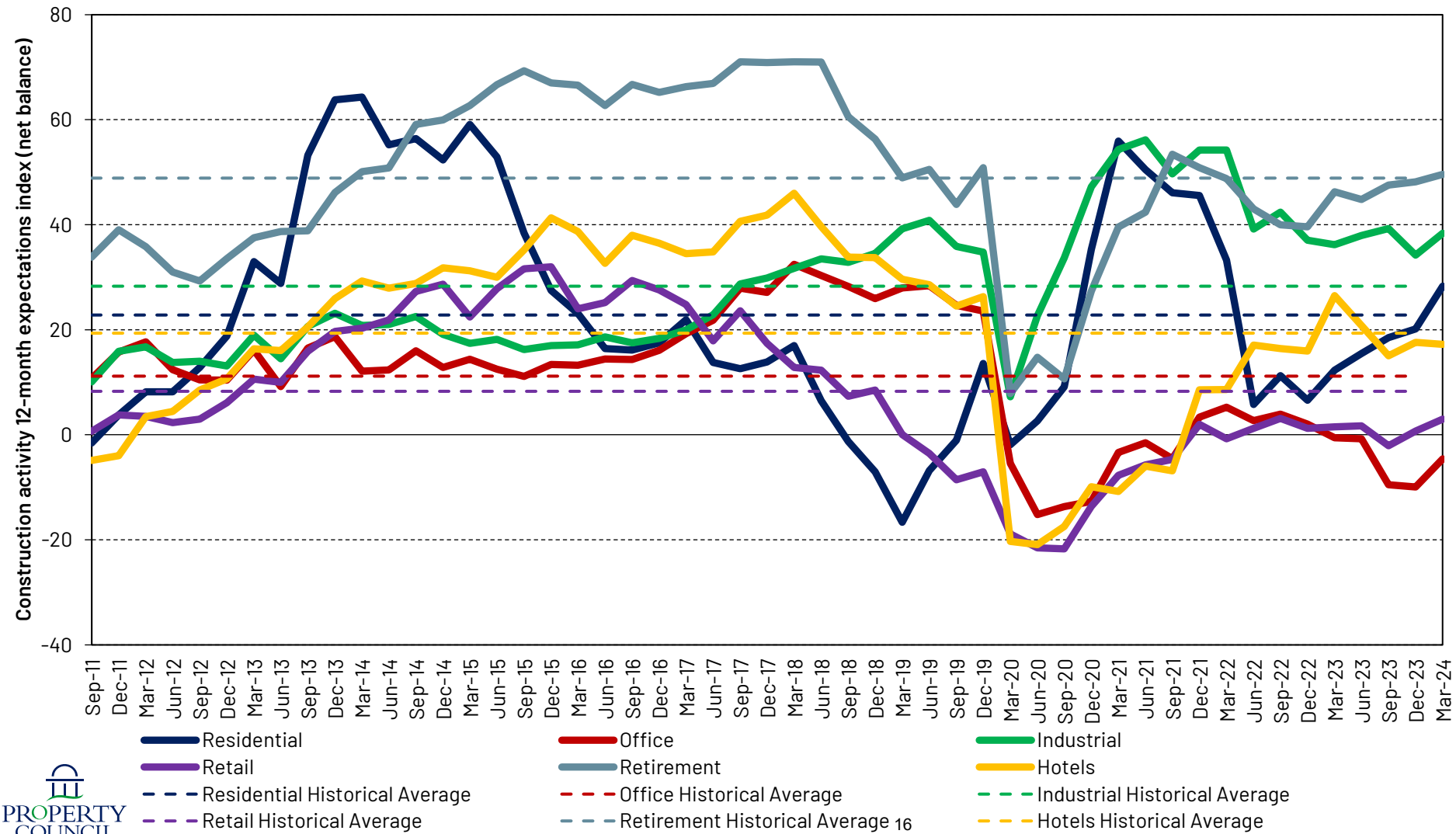
# Hotel capital growth expectations

Over the NEXT 12 MONTHS in the state you primarily operate, how do you expect capital values to change for HOTELS, TOURISM & LEISURE:



# Construction activity expectations by sector

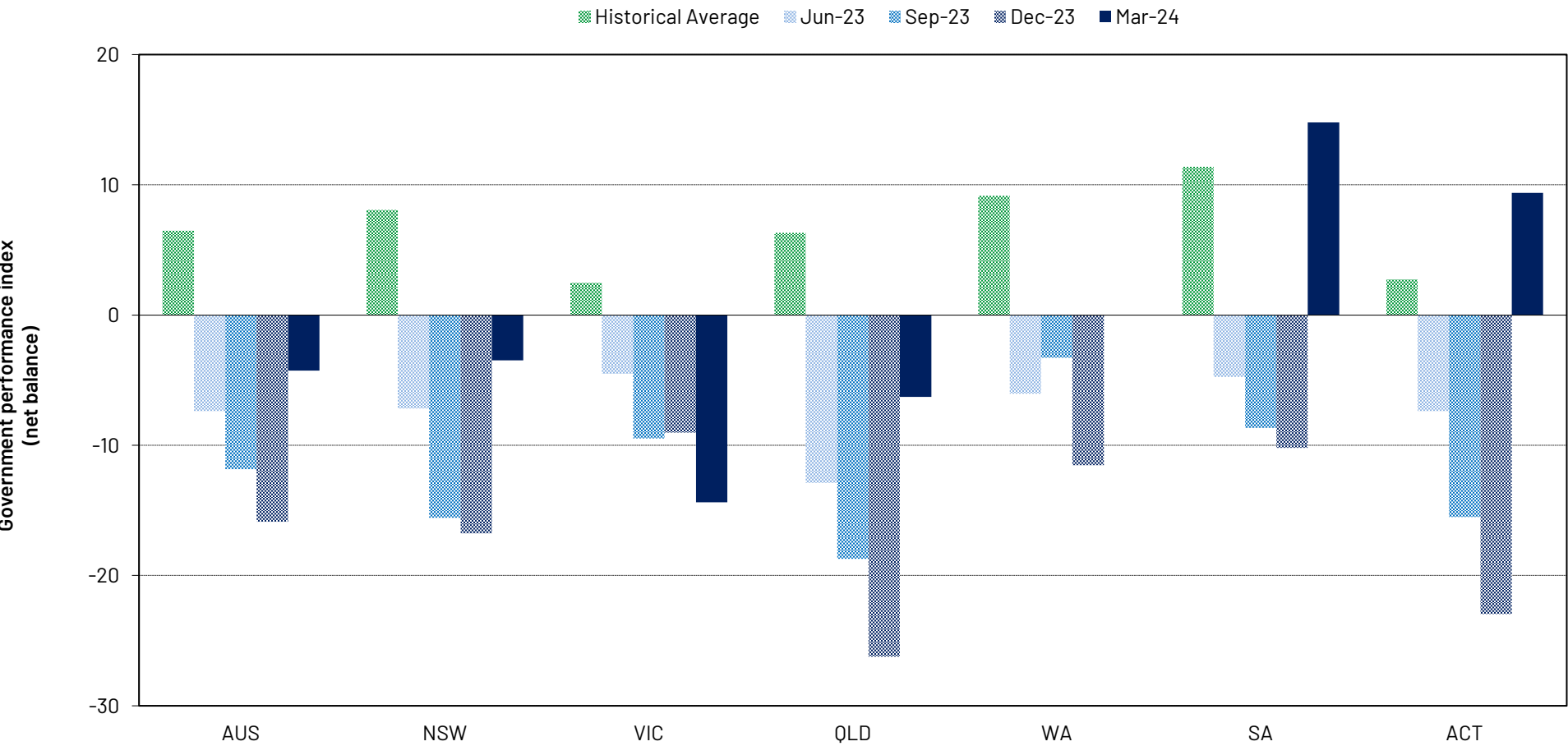
Over the NEXT 12 MONTHS, how would you describe construction activity levels?





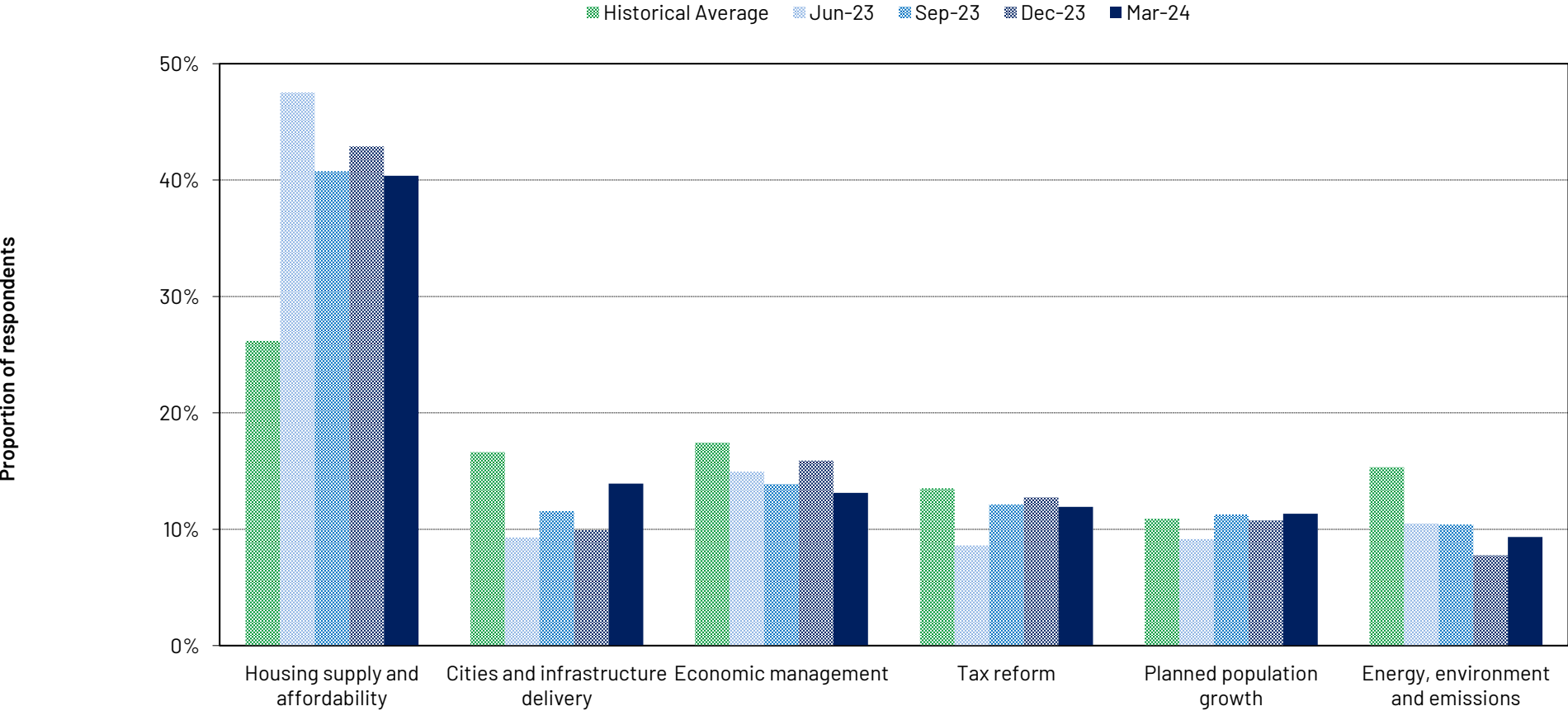
# Federal Government performance index

Is the Australian Federal Government doing a good job in delivering policies that encourage jobs and economic growth?



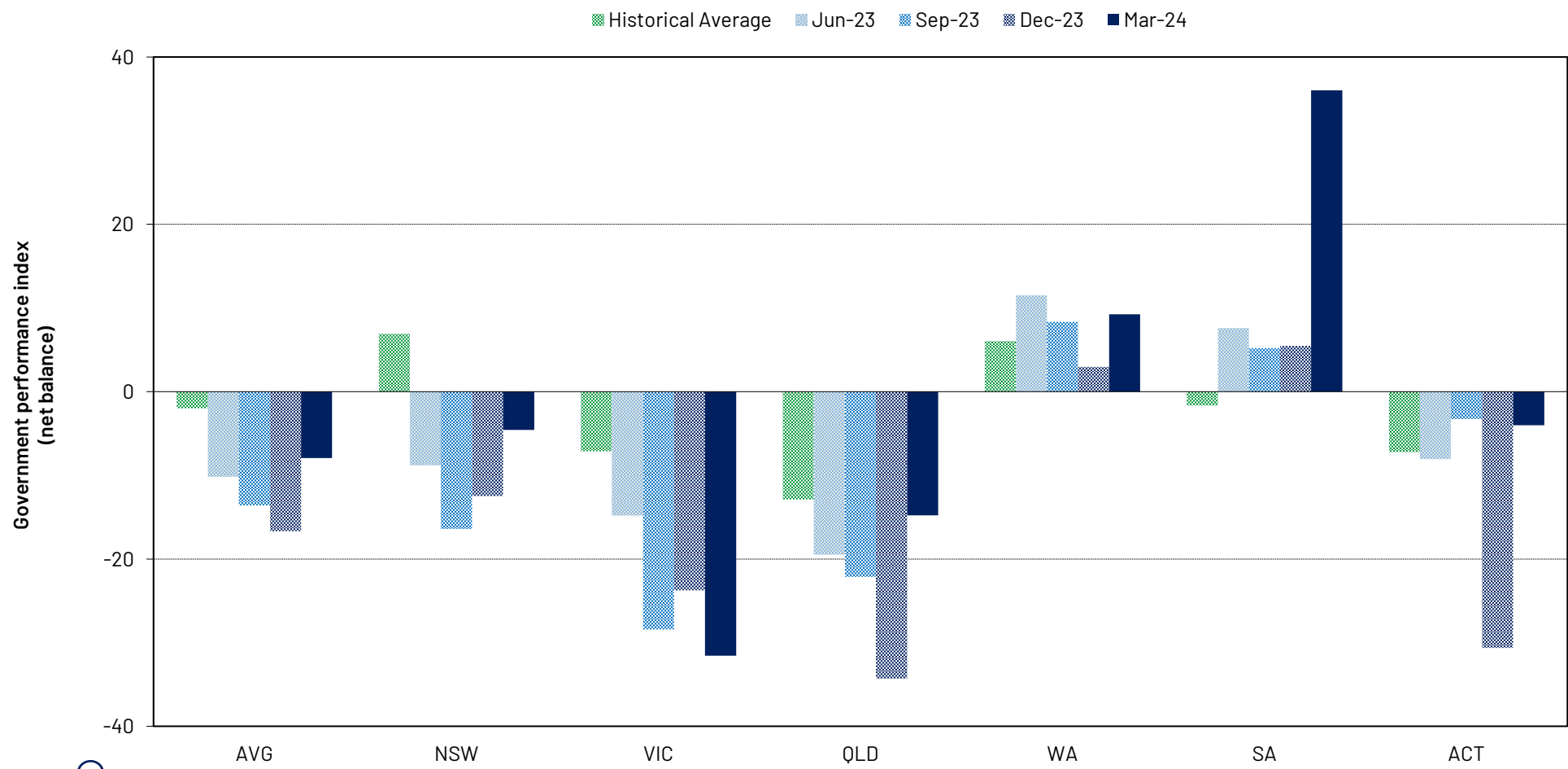
# Critical issue for Federal Government

What is the most critical issue for the property industry that you would like to see addressed by the Australian Federal Government?



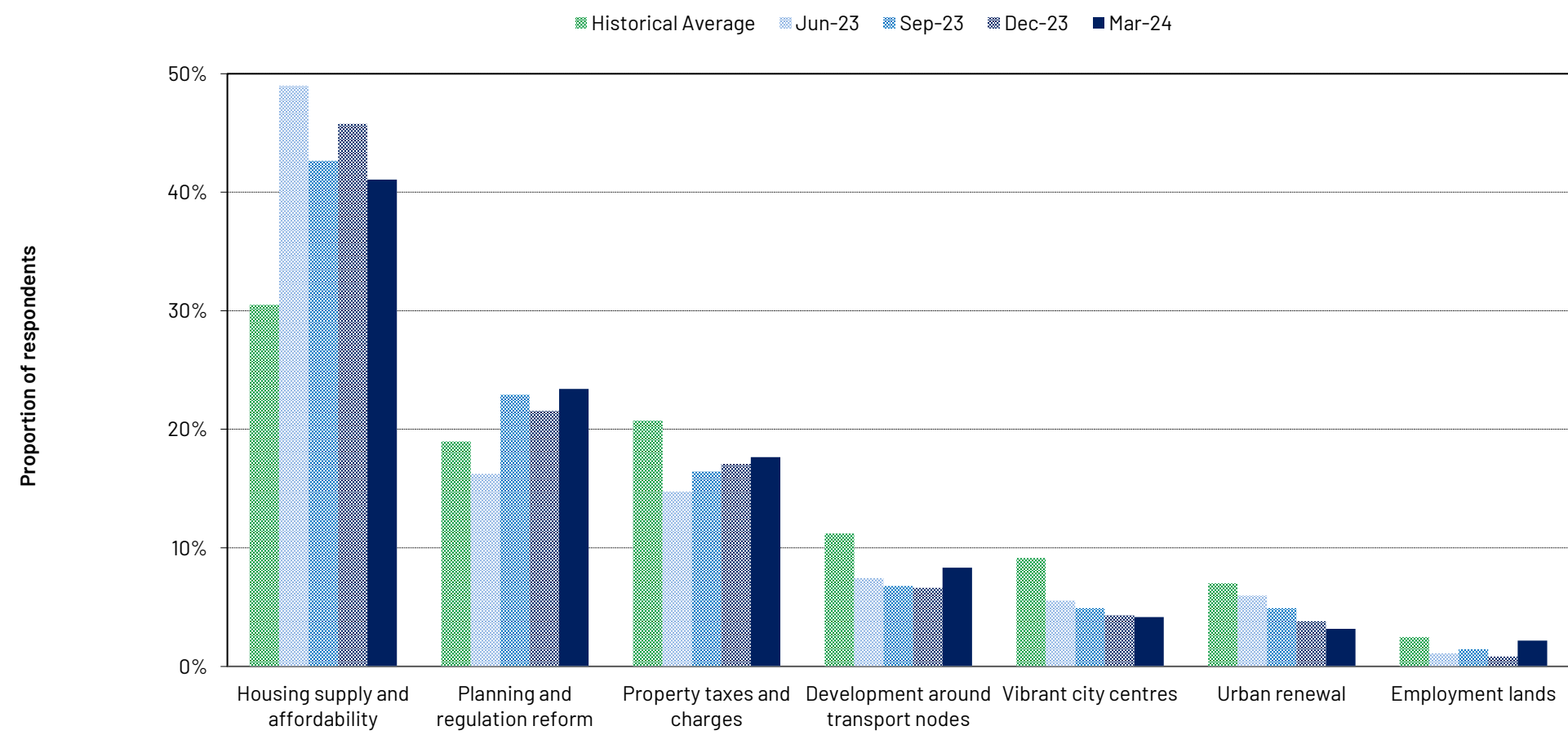
# State Government performance index

Is the State/Territory Government where you primarily operate doing a good job planning and managing growth?



# Critical issue for State Government

What is the most critical issue for the property industry that you would like to see addressed by your state or territory Government?



# Procore / Property Council Industry Sentiment Survey

The Procore / Property Council Survey commenced in 2011. It is now one of Australia's largest surveys of sentiment in the property industry – our largest industry and employer which supports 1.4 million jobs.

Respondents are drawn from across the property industry, including property developers, managers and agents and service providers.

The Q1 2024 survey was conducted online between 11 March and 27 March 2024 and included 508 respondents.

