



June  
quarter

# 2023

## ANZ/Property Council survey

Chart Book

Principal Sponsor



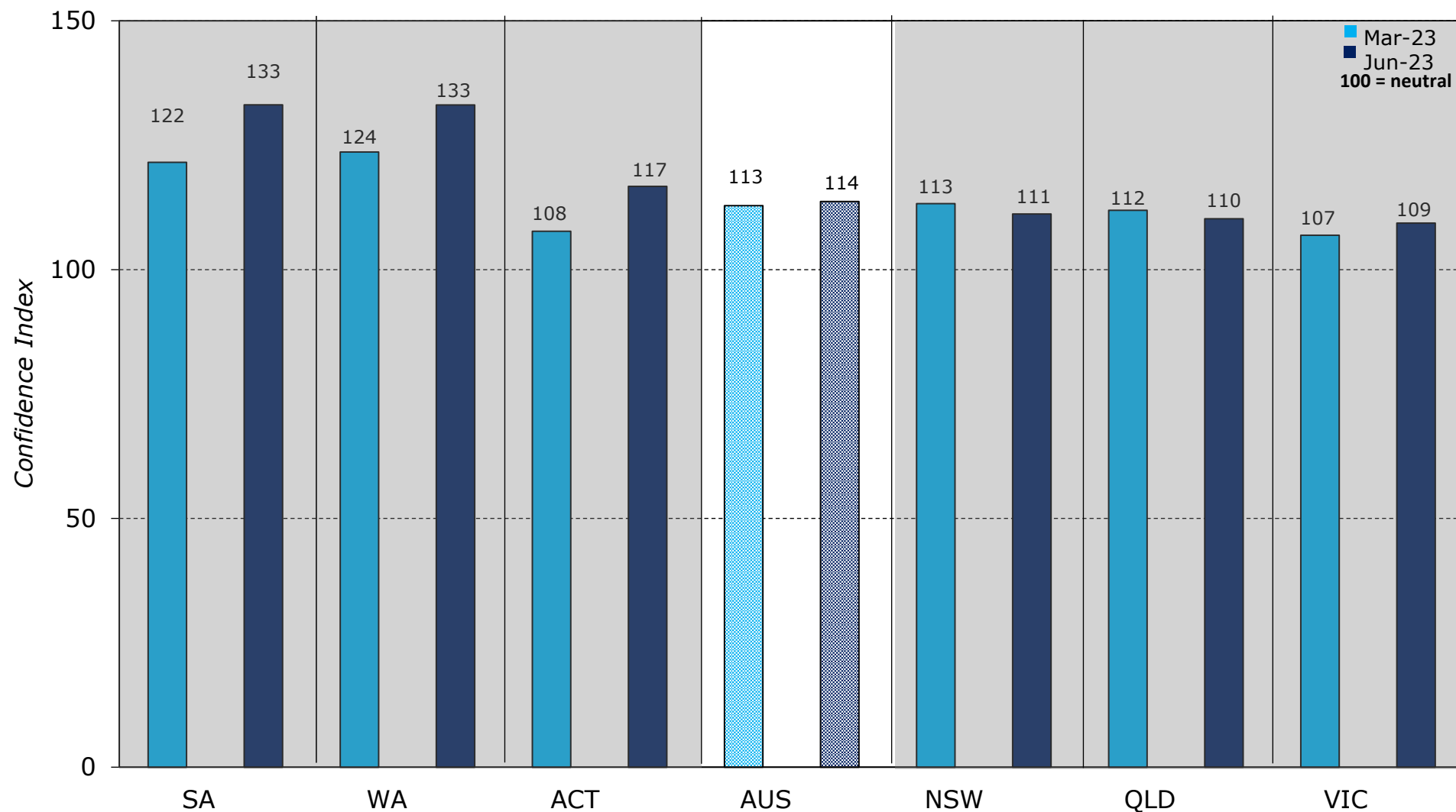
Supporting Sponsor



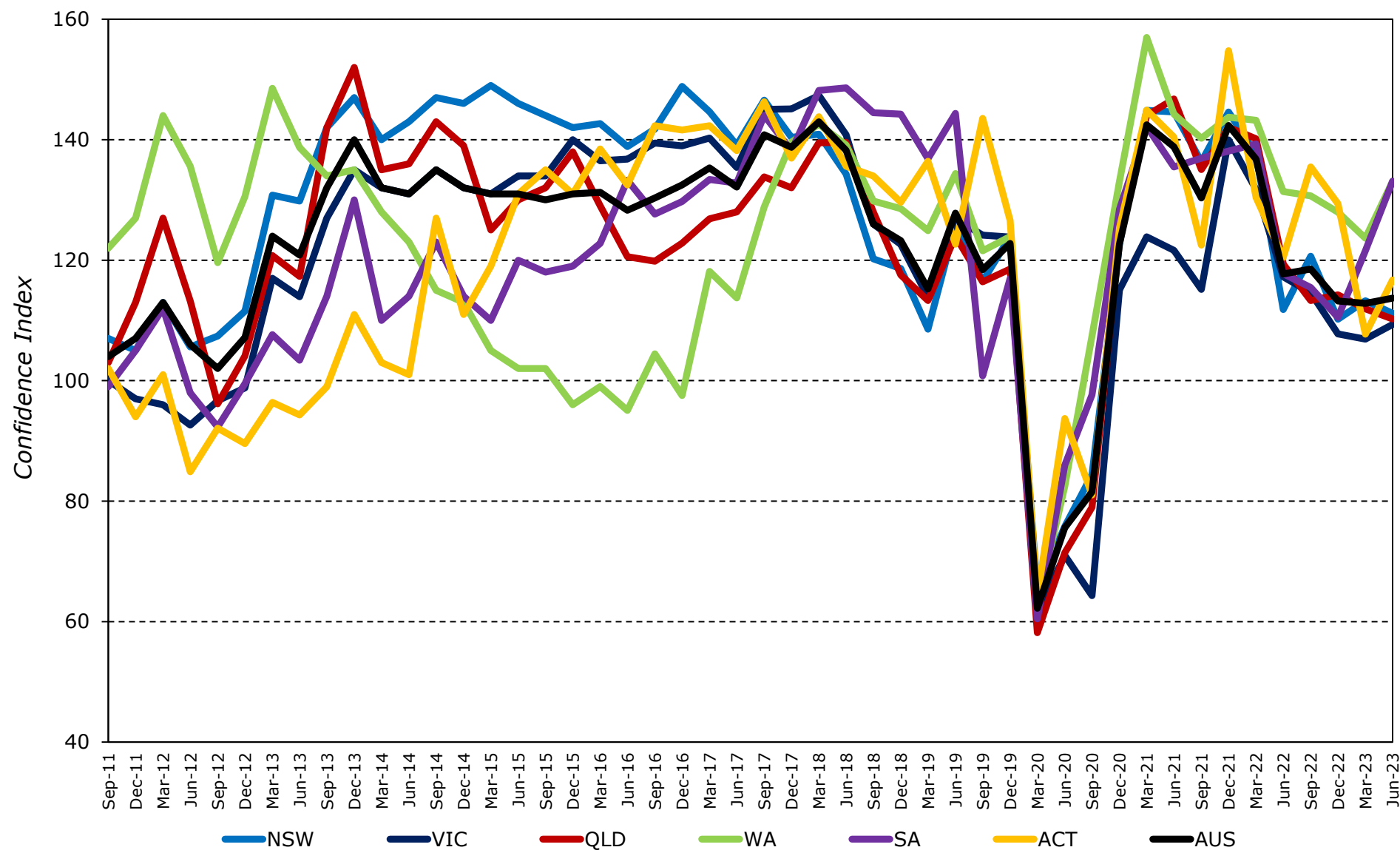
Great cities | Strong economies | Sustainable communities

## ANZ/Property Council Survey

June 2023



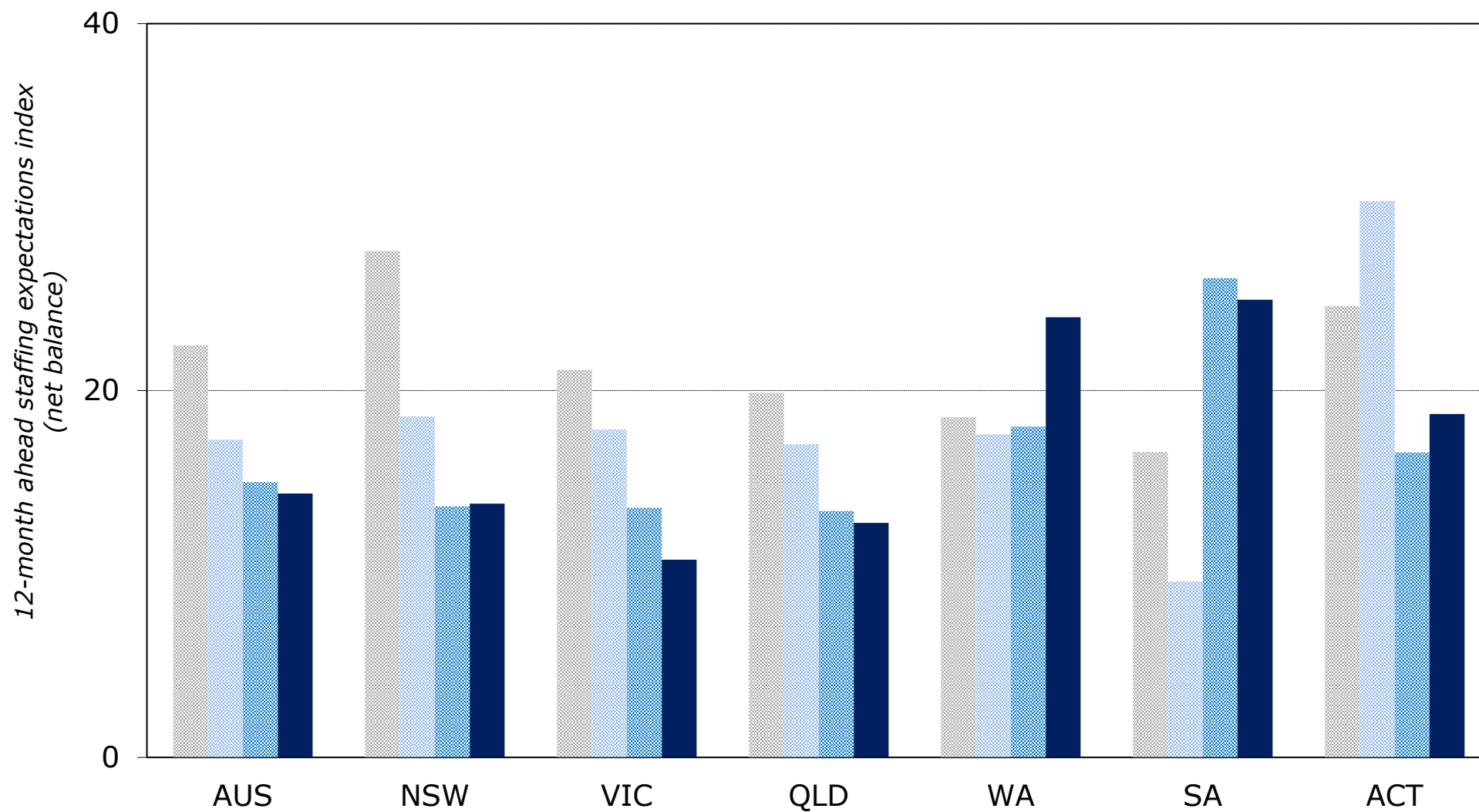
## ANZ/Property Council Survey



## Staffing level expectations

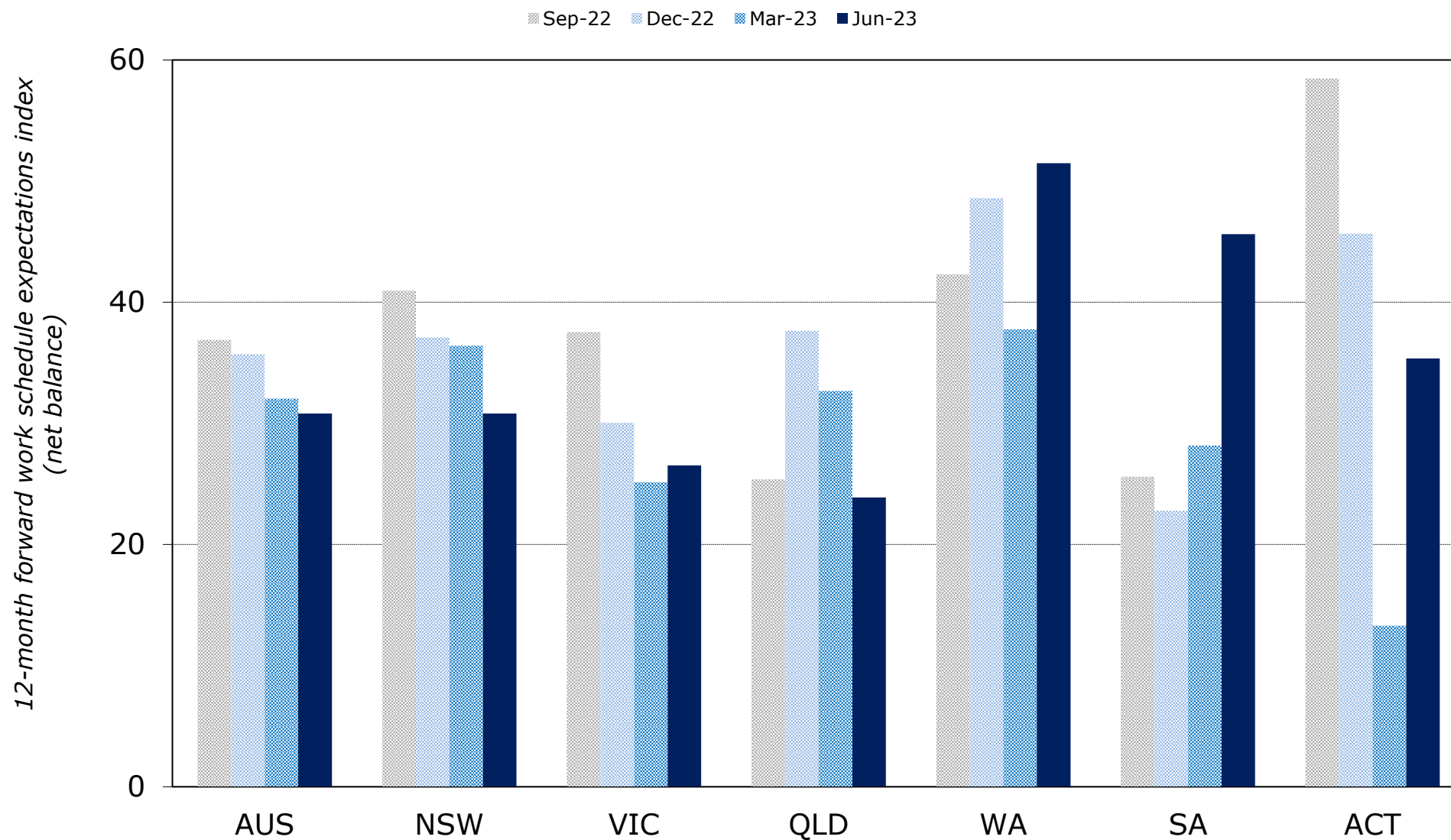
Over the NEXT 12 MONTHS do you expect your staffing levels to:

Sep-22 Dec-22 Mar-23 Jun-23



## Forward work schedule expectations

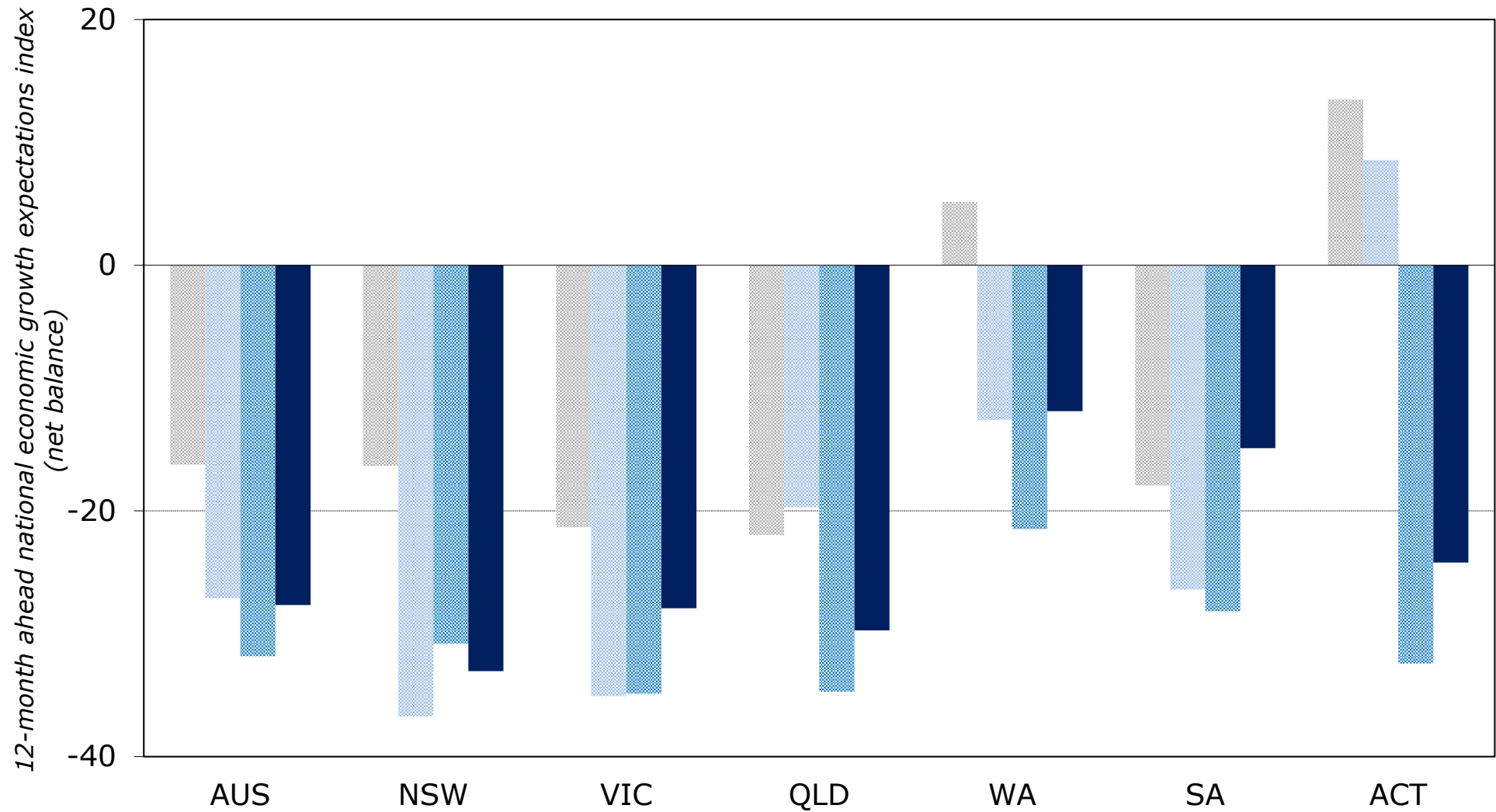
Over the NEXT 12 MONTHS in the state you primarily operate, will your forward work schedule:



## National economic growth expectations

Over the NEXT 12 MONTHS will Australia's economic growth be:

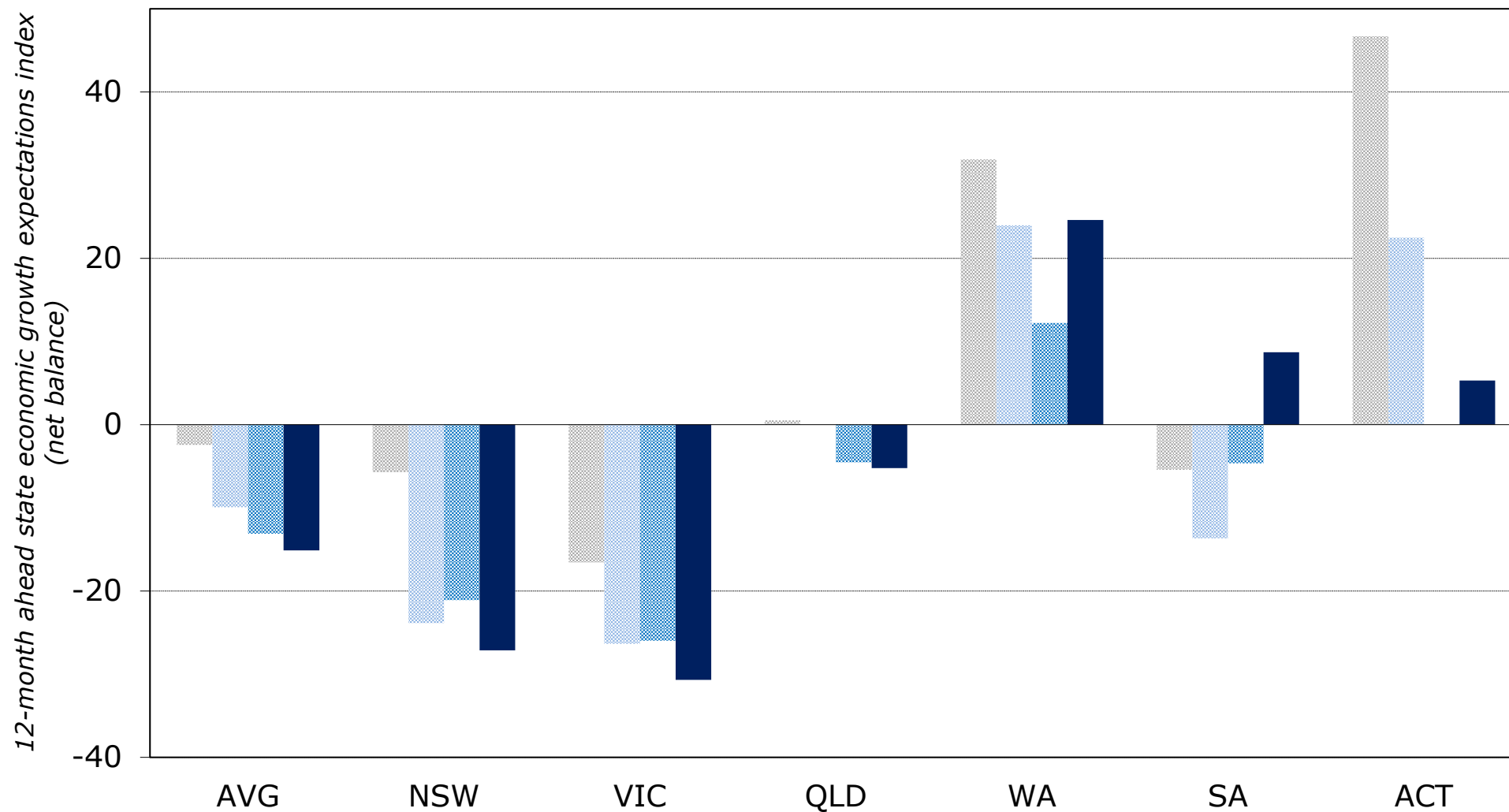
Sep-22 Dec-22 Mar-23 Jun-23



## State economic growth expectations

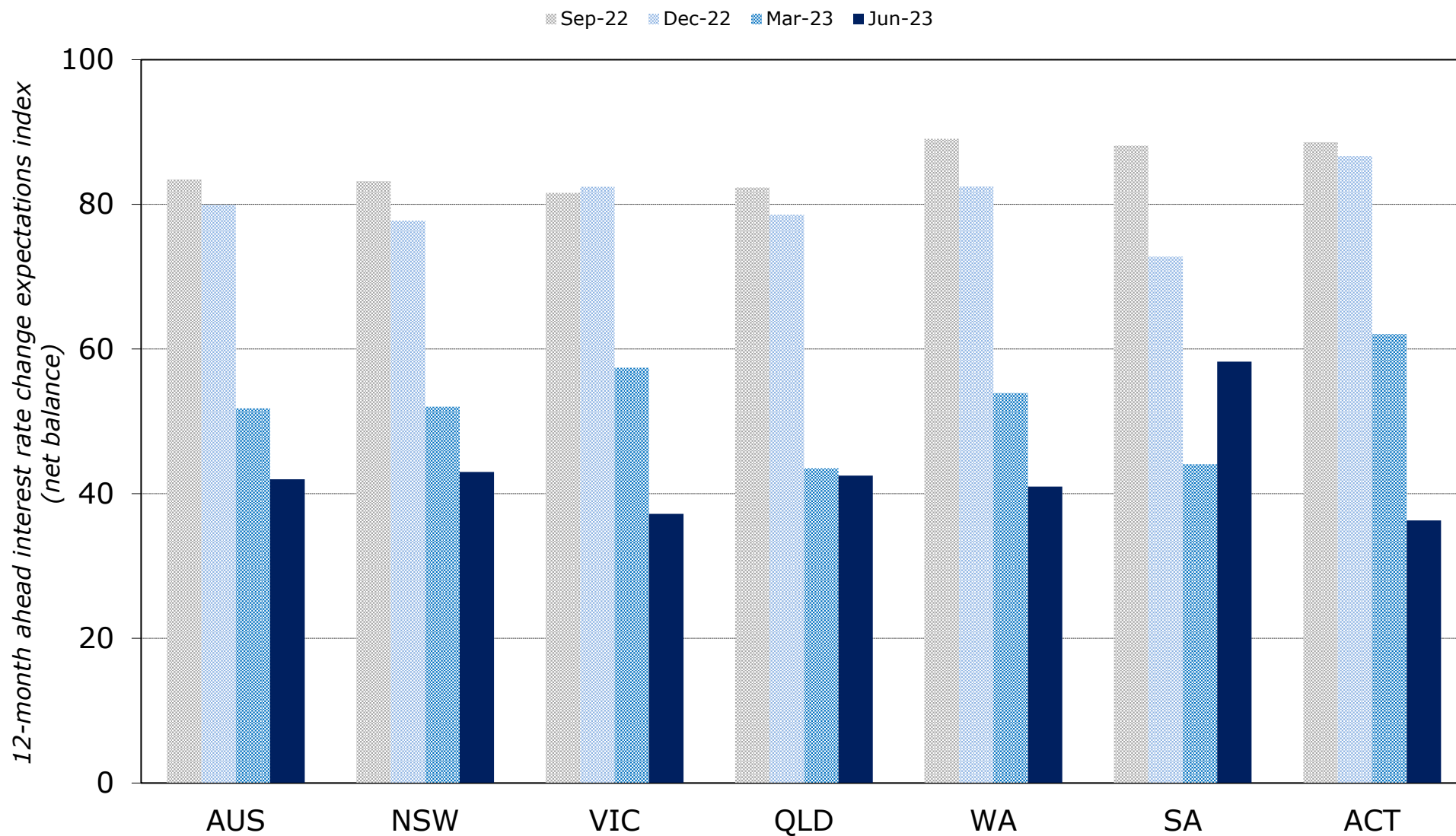
Over the NEXT 12 MONTHS in the state you primarily operate, will economic growth be:

Sep-22   Dec-22   Mar-23   Jun-23



## Interest rate expectations

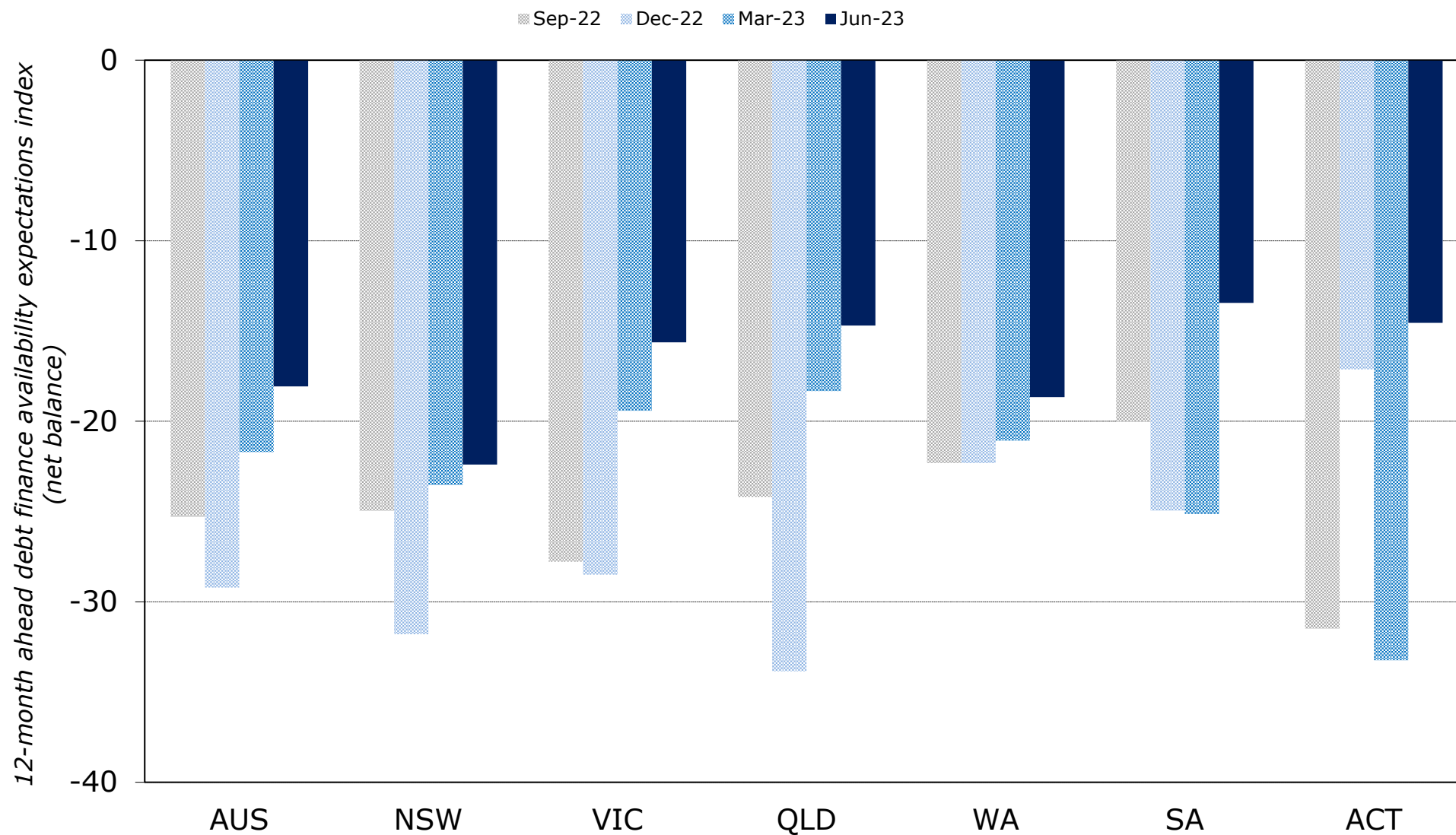
Over the NEXT 12 MONTHS how do you expect INTEREST RATES to change:





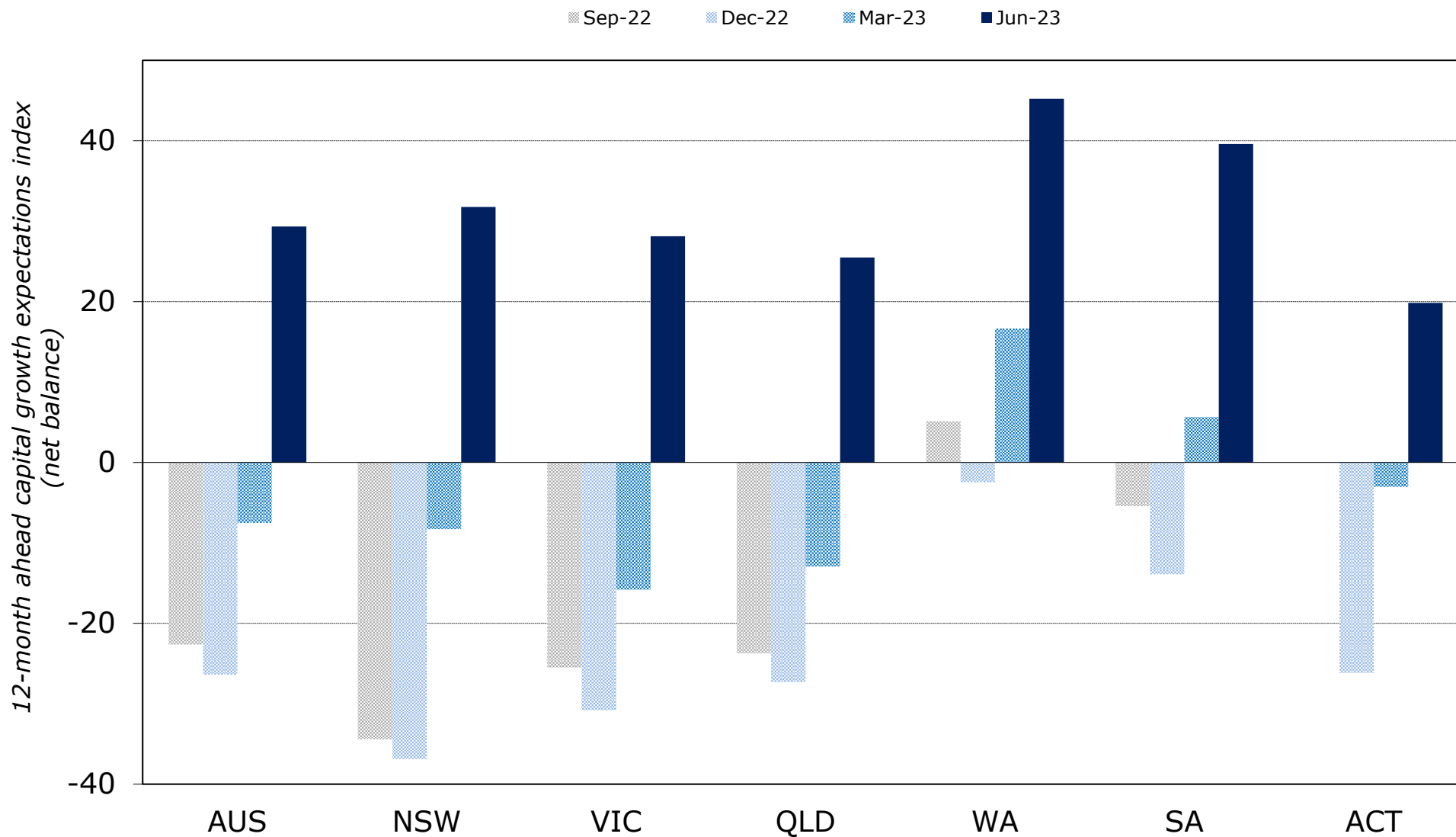
## Debt finance availability expectations

Over the NEXT 12 MONTHS how do you expect the AVAILABILITY OF DEBT FINANCE to change:



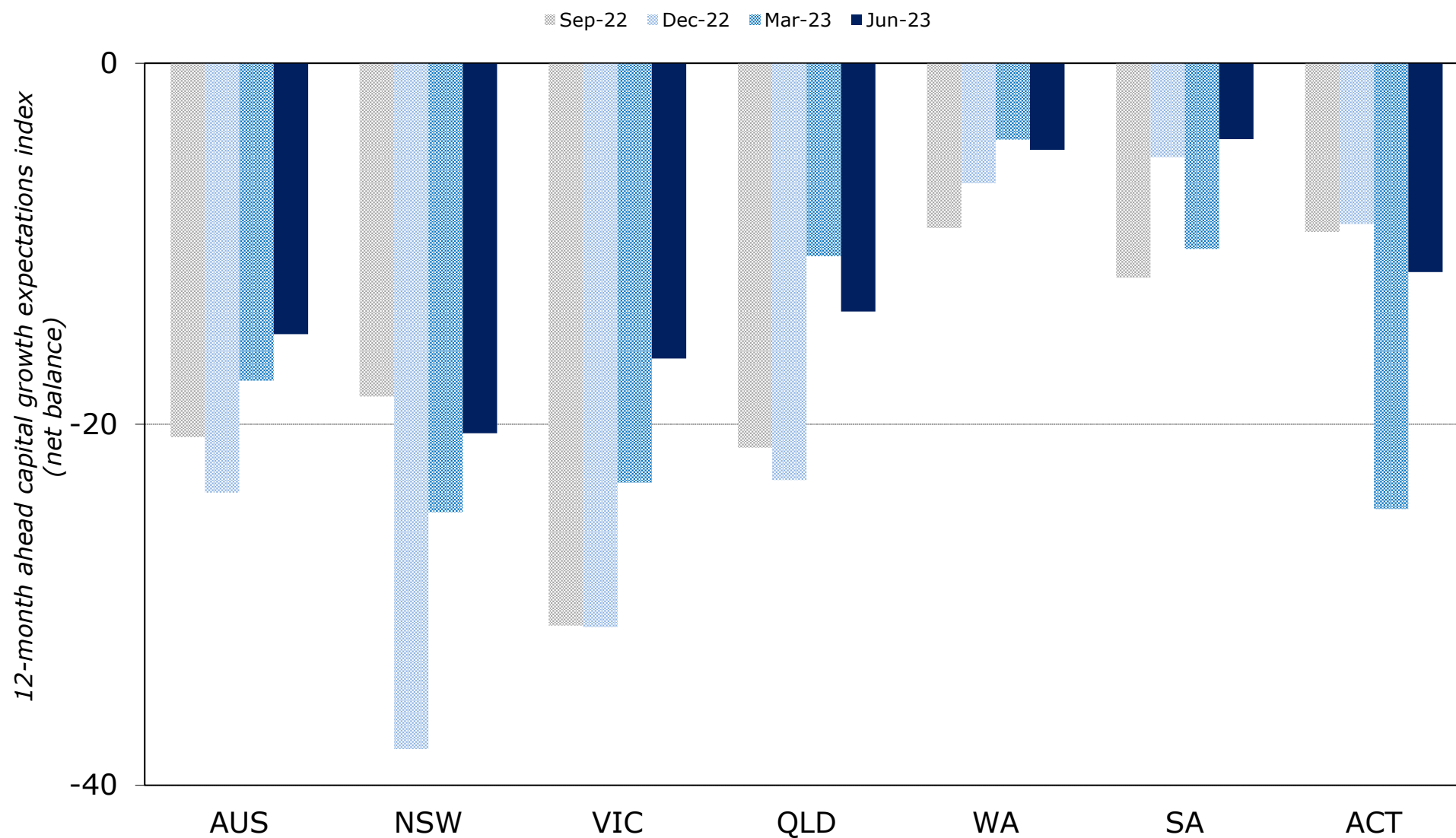
## House capital growth expectations

Over the NEXT 12 MONTHS in the state you primarily operate, how do you expect capital values to change for RESIDENTIAL:



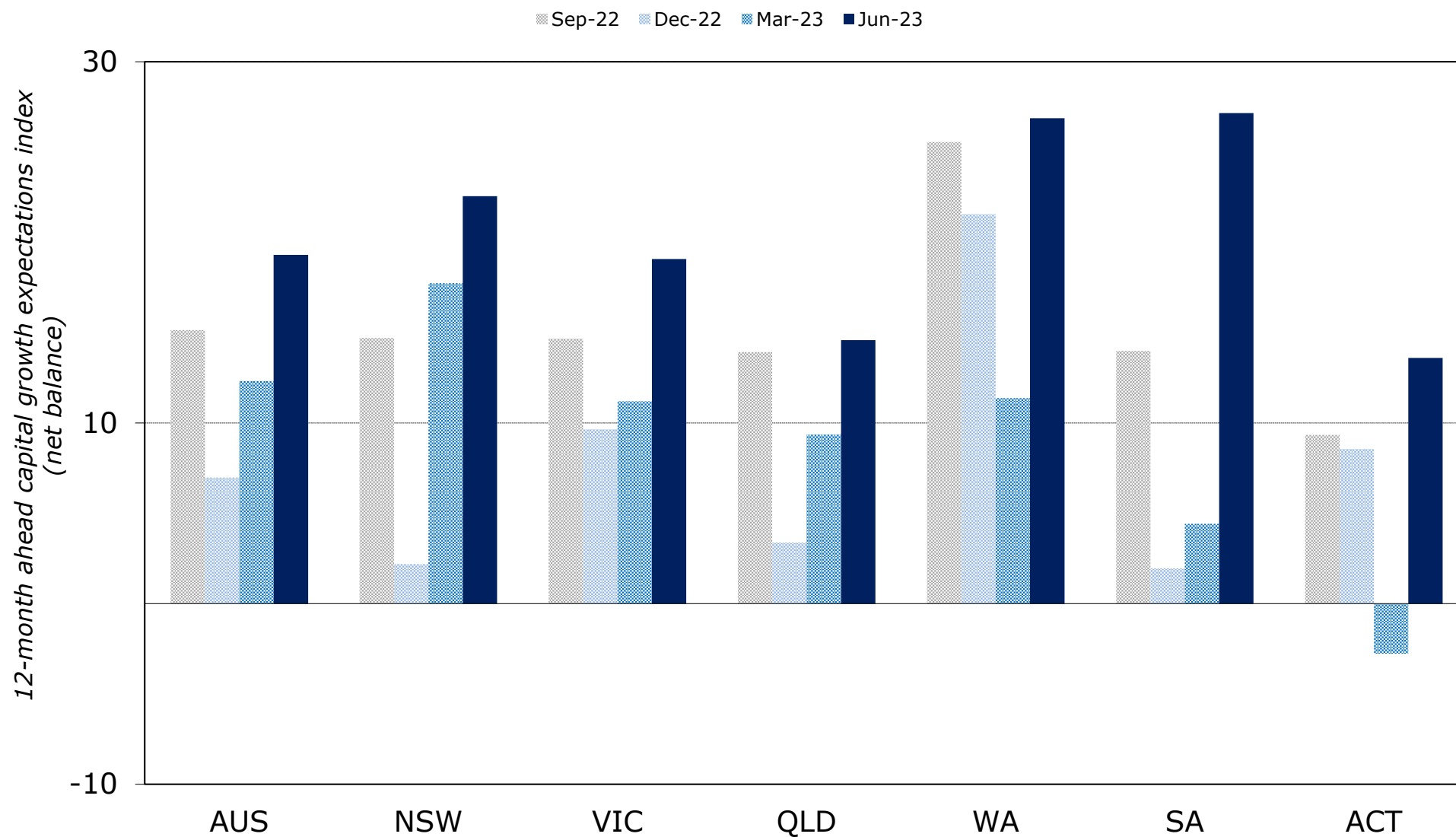
## Office capital growth expectations

Over the NEXT 12 MONTHS in the state you primarily operate, how do you expect capital values to change for OFFICE:



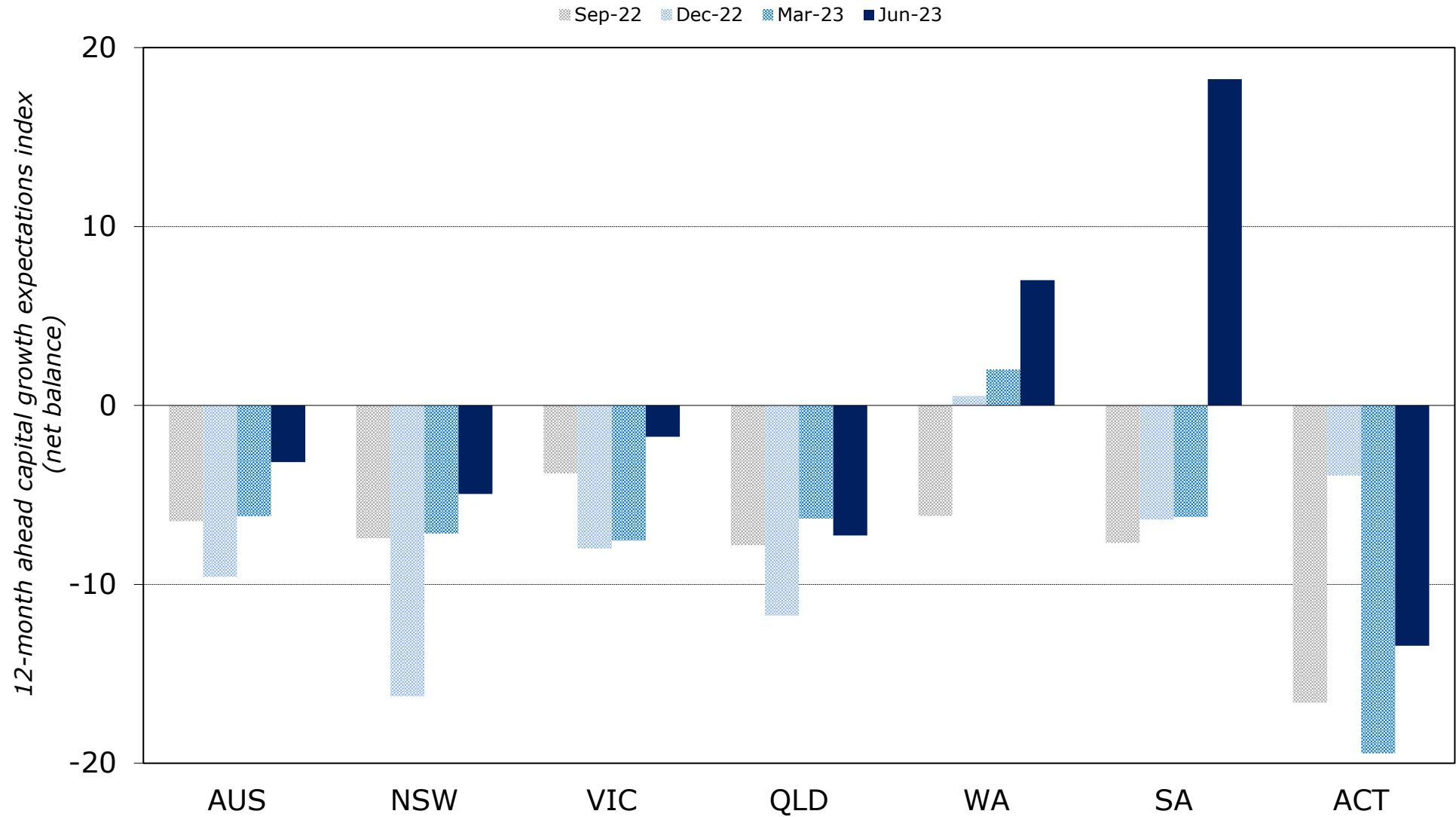
## Industrial capital growth expectations

Over the NEXT 12 MONTHS in the state you primarily operate, how do you expect capital values to change for INDUSTRIAL:



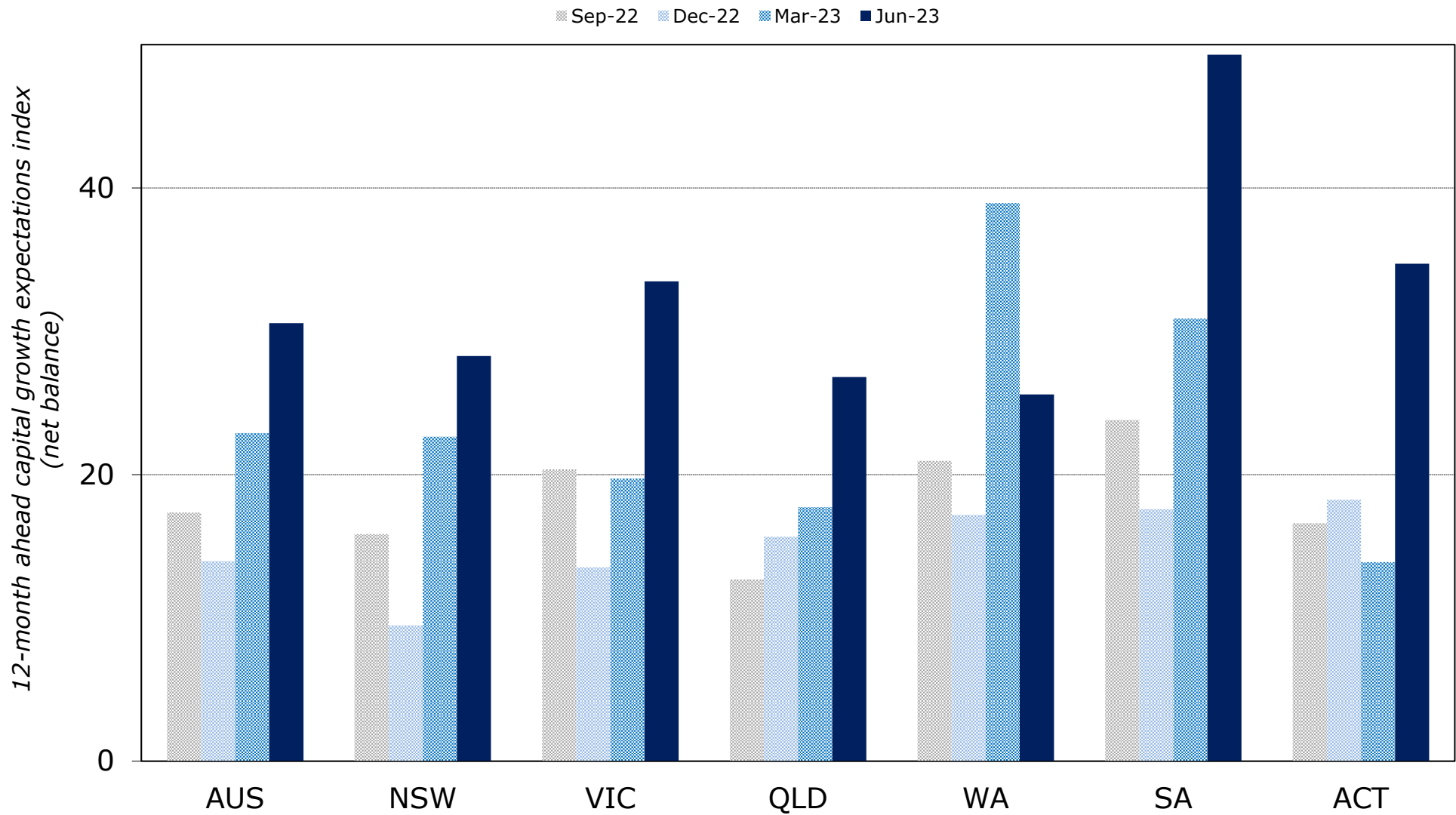
## Retail capital growth expectations

Over the NEXT 12 MONTHS in the state you primarily operate, how do you expect capital values to change for SHOPPING CENTRES:



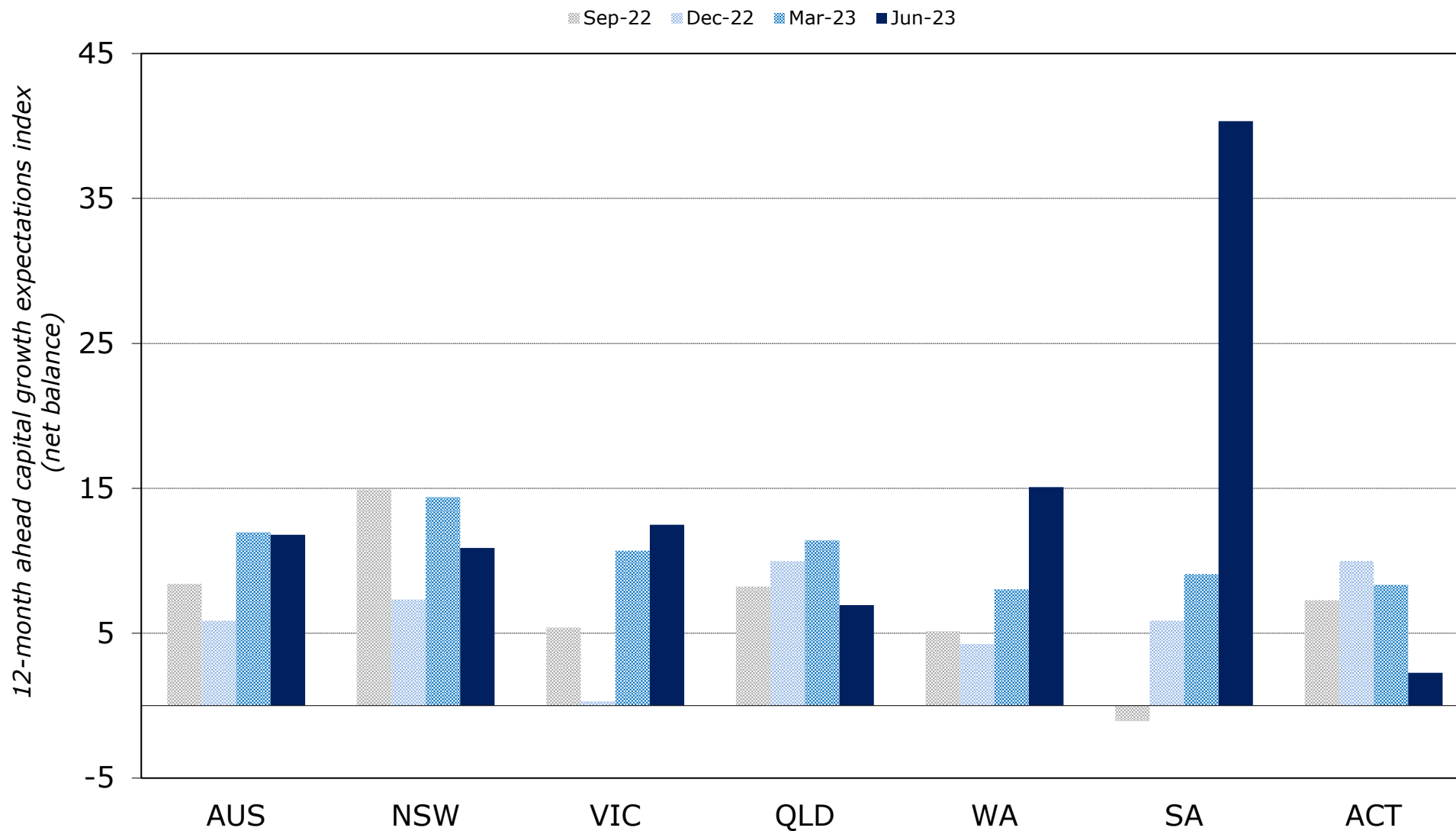
## Retirement living capital growth expectations

Over the NEXT 12 MONTHS in the state you primarily operate, how do you expect capital values to change for RETIREMENT LIVING:



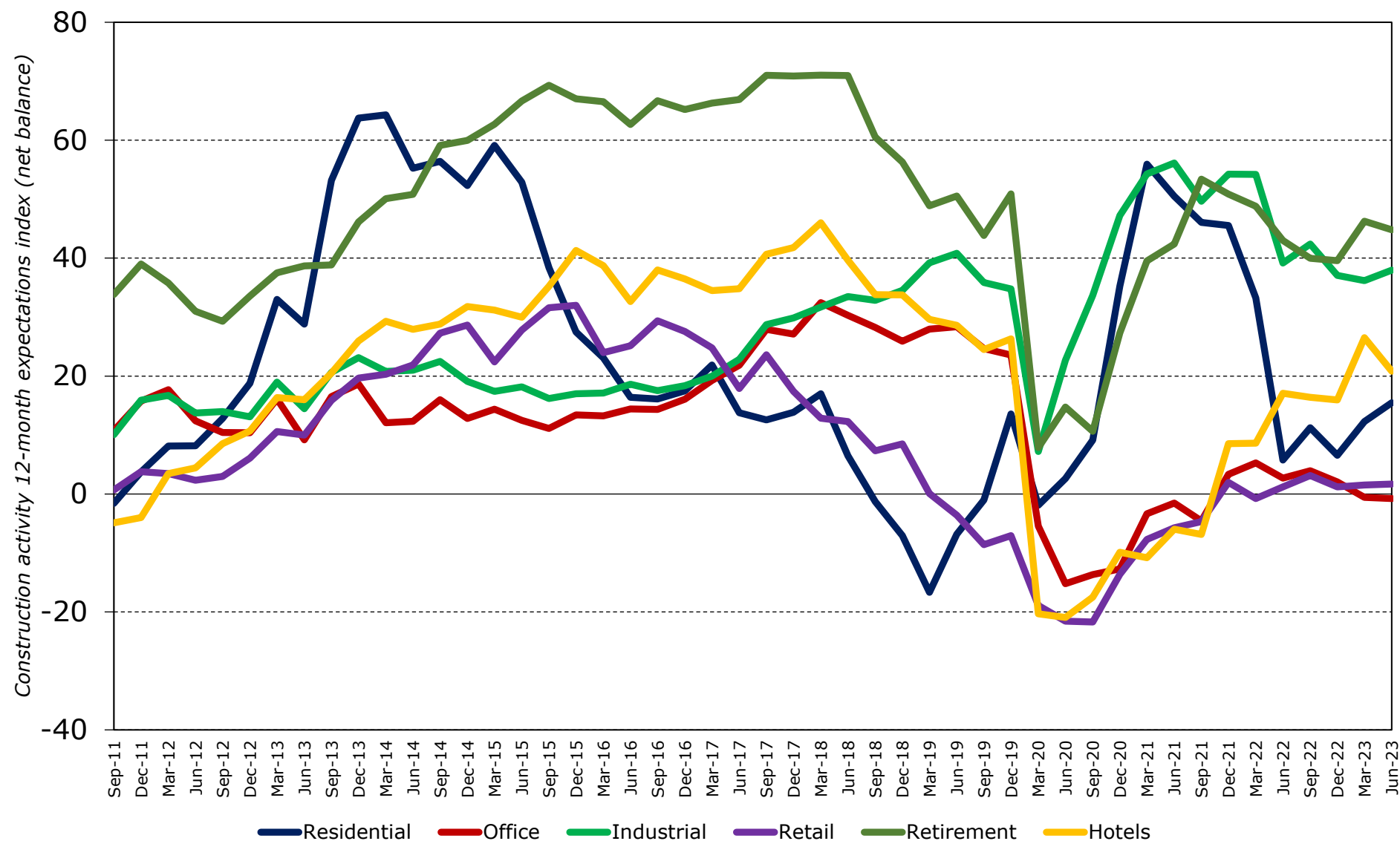
## Hotel capital growth expectations

Over the NEXT 12 MONTHS in the state you primarily operate, how do you expect capital values to change for HOTELS, TOURISM & LEISURE:



## Construction activity expectations by sector

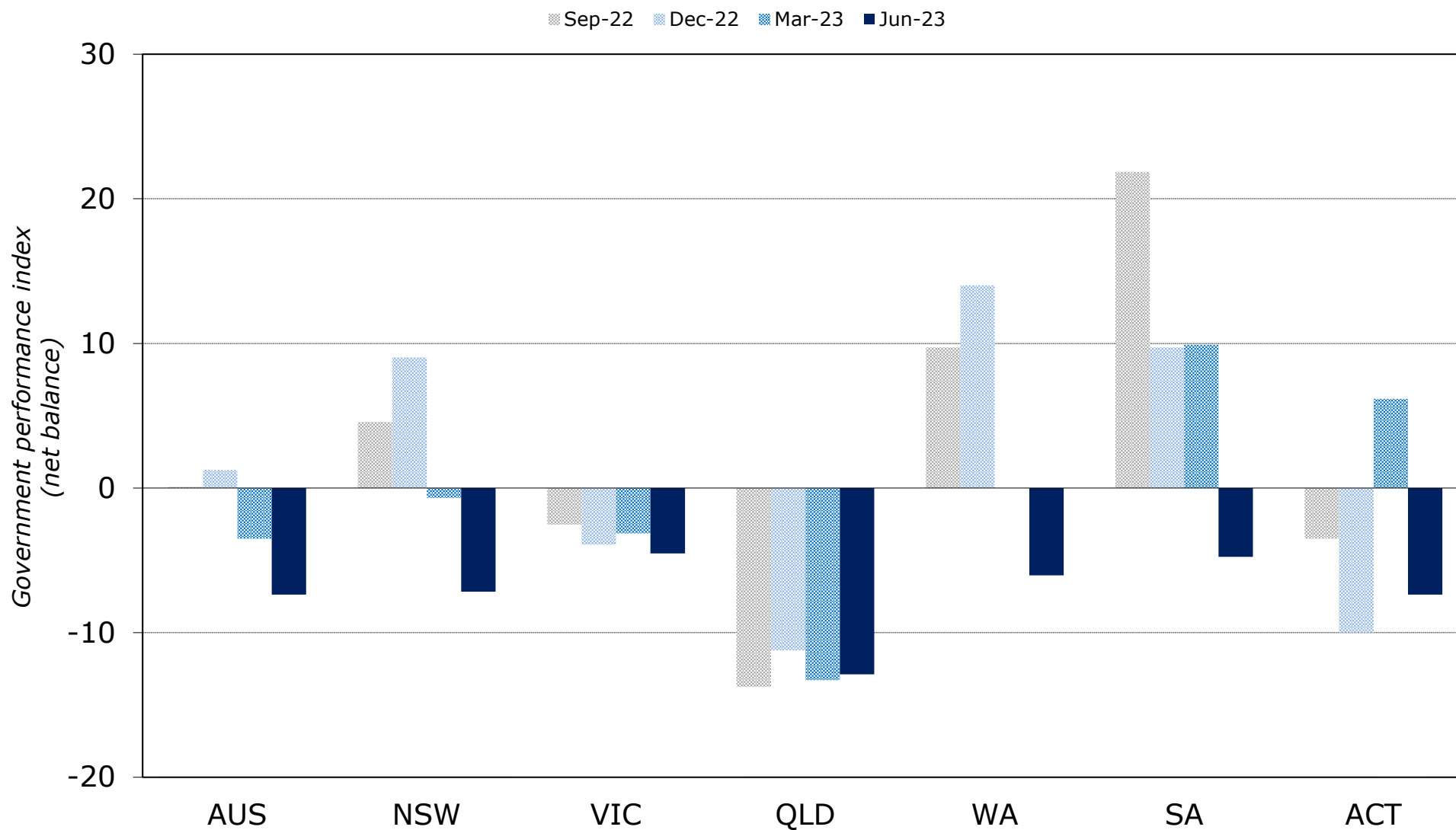
Over the NEXT 12 MONTHS, how would you describe construction activity levels?





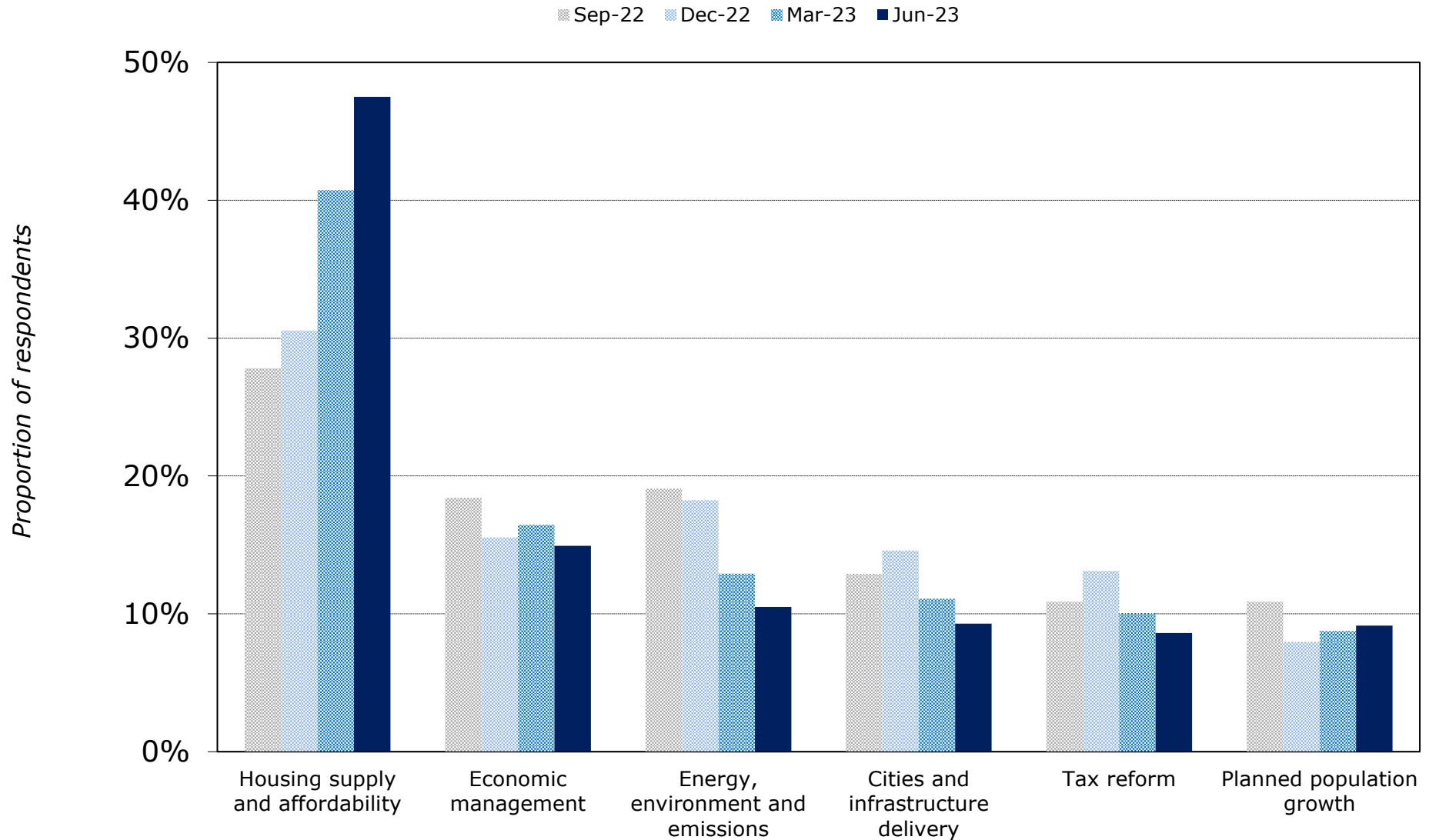
## Federal Government performance index

Is the Australian Federal Government doing a good job in delivering policies that encourage jobs and economic growth?



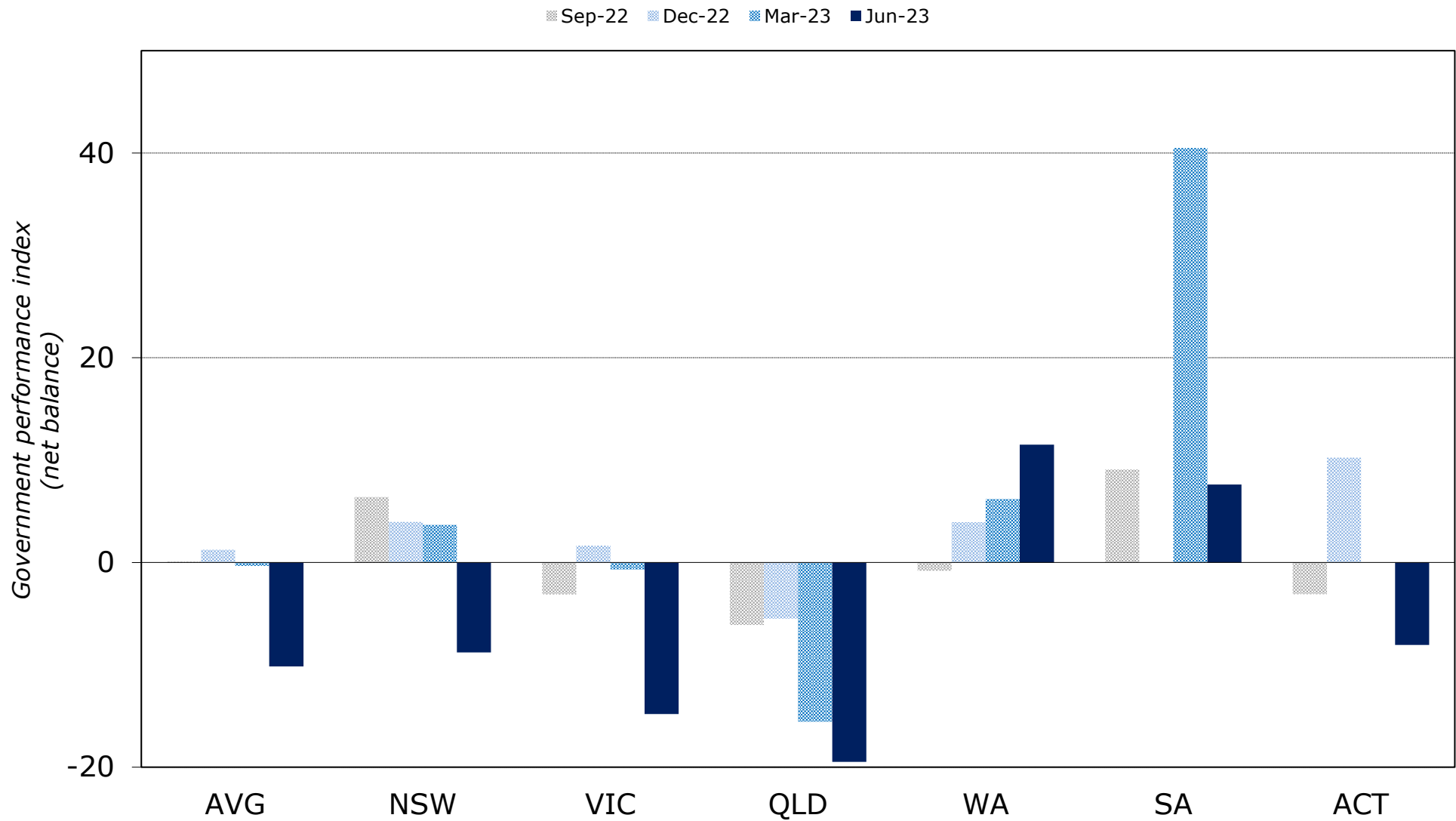
## Critical issue for Federal Government

What is the most critical issue for the property industry that you would like to see addressed by the Australian Federal Government?



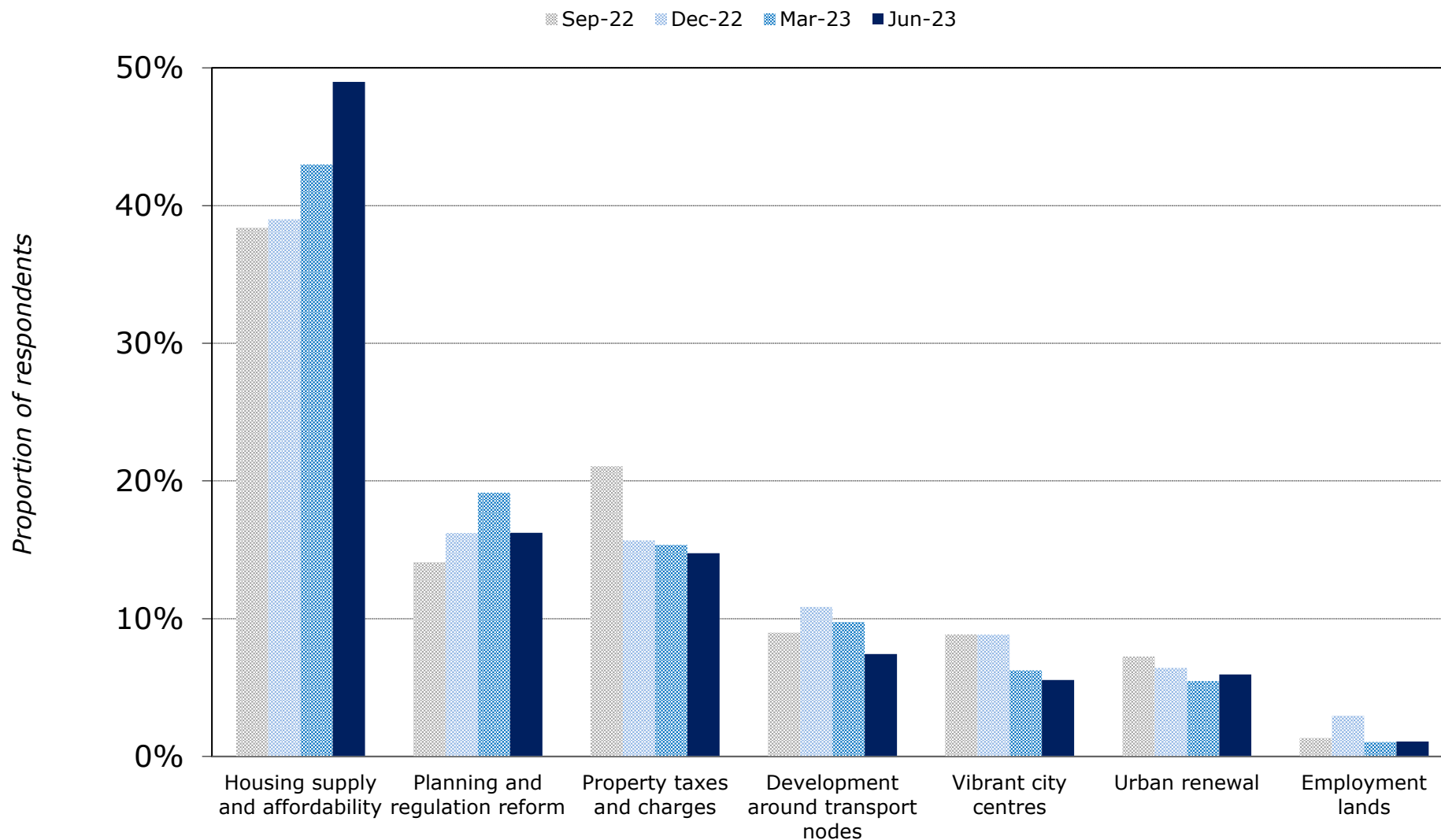
## State Government performance index

Is the State/Territory Government where you primarily operate doing a good job planning and managing growth?



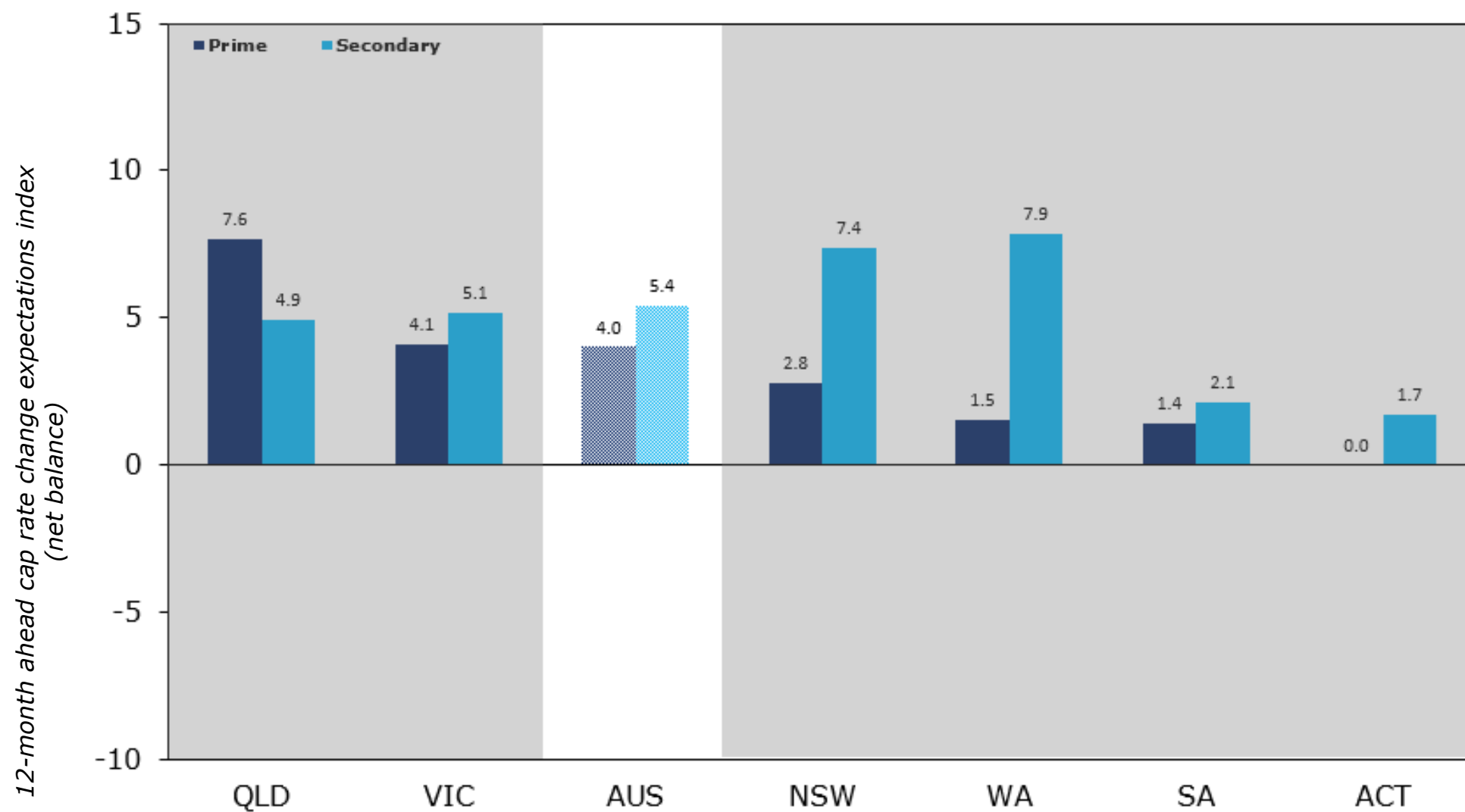
## Critical issue for State Government

What is the most critical issue for the property industry that you would like to see addressed by your state or territory Government?



## 12-month cap rate expectations index

Over the NEXT 12 MONTHS in the state AND sector you primarily operate, do you expect cap rates to:





The ANZ/Property Council Survey commenced in 2011. It is now one of Australia's largest surveys of sentiment in the property industry – our largest industry and employer which supports 1.4 million jobs.

Respondents are drawn from across the property industry, including property developers, managers and agents and service providers.

The Q2 2023 survey was conducted online between 5 June and 21 June 2023 and included 744 respondents.

For more information visit:

[ANZ/ Property Council survey](#)

[ANZ website](#)

[RCP website](#)

Principal Sponsor



Supporting Sponsor





## For more information, contact:

### Property Council Research

P 02 9033 1900 F 02 9033 1978

E: [research@propertycouncil.com.au](mailto:research@propertycouncil.com.au)

W: [www.propertycouncil.com.au](http://www.propertycouncil.com.au)

While the material contained in this publication is based on information which the Property Council of Australia (including its Directors, officers, employees and agents) understands to be reliable, its accuracy and completeness cannot be guaranteed. This publication is general and does not take into account the particular circumstances or needs of any person who may read it. You should obtain independent advice from suitably qualified consultants and professionals before making any decisions in relation to the contents of this publication. The Property Council of Australia is not liable and accepts no responsibility for any claim, loss or damage of whatever nature suffered by any person or corporation who relies or seeks to rely on any information, advice or opinion contained in this publication, or otherwise given by the Property Council of Australia.

Copyright: This publication is copyright. The Property Council of Australia is the copyright owner. Except as permitted under the Copyright Act 1968 (Cth), no part of this publication may be reproduced, stored in a retrieval system or transmitted in any form or by any means, electronic or otherwise, without the permission of the copyright owner.

Principal Sponsor



Supporting Sponsor

